

MEETING DATE: April 27, 2017

TITLE: Resolution Supporting Boundary Adjustment Between Carver County Water Management Organization and Minnehaha Creek Watershed District

RESOLUTION NUMBER: 17-031

PREPARED BY: Anna Brown

E-MAIL: abrown@minnehahacreek.org

TELEPHONE: 952-641-4522

REVIEWED BY: Administrator Counsel Program Mgr. (Name): _____
 Board Committee Engineer Other

WORKSHOP ACTION:

<input type="checkbox"/> Advance to Board mtg. Consent Agenda.	<input type="checkbox"/> Advance to Board meeting for discussion prior to action.
<input type="checkbox"/> Refer to a future workshop (date): _____	<input type="checkbox"/> Refer to taskforce or committee (date): _____
<input type="checkbox"/> Return to staff for additional work.	<input type="checkbox"/> No further action requested.
<input checked="" type="checkbox"/> Other (specify): Approval at May 11, 2017 Meeting	

PURPOSE or ACTION REQUESTED:

Resolution to support the proposed boundary change between Carver County Water Management Organization and the Minnehaha Creek Watershed District

PROJECT/PROGRAM LOCATION:

The Boundary Change applies to all parcels falling along the legal and hydrologic boundary between Carver County Water Management Organization and the Minnehaha Creek Watershed District.

PROJECT TIMELINE:

The timeline will be determined by the Board of Water and Soil Resources upon completion of the petition process

PROJECT/PROGRAM COST:

N/A

PAST BOARD ACTIONS:

February 18, 2016 – PPC Discussion of CCWMO-MCWD-RPBCWD Boundary Change

SUMMARY:

In February of 2016, Carver County Water Management Organization (CCWMO) initiated discussions with Minnehaha Creek Watershed District (MCWD) and Riley Purgatory Bluff Creek Watershed District (RPBCWD) to conduct boundary adjustments to more closely align the legal boundaries of the CCWMO with each of the two districts. Both the existing and proposed adjusted boundaries follow parcel lines, but the adjusted boundary would more closely align the political boundaries of the two organizations with the hydrologic

boundary. The adjustment applies to the full shared boundary between MCWD and CCWMO, which covers all of Carver County parcels along the boundary edge.

The process for a boundary adjustment between watershed management organizations is as follows:

- Initiation of the proceeding to adjust the boundary through petition to the Board of Water and Soil Resources (BWSR)
- All watershed management organizations and local units of government with property affected by the boundary adjustment must adopt resolutions supporting the adjustment
- Before acting on the petition, BWSR will publish notice of the proposed boundary adjustment and will hold a public hearing if requested

Geospatial technology has allowed watershed management organizations to more accurately determine hydrologic boundaries and align them with existing parcels, showing that many parcels are now misassigned to one or the other District. Further, because legal boundary lines follow parcel lines, subdivision of larger parcels allows the legal boundary to more precisely match the hydrologic boundary. The analysis of parcel adjustments was conducted by CCWMO and reviewed by both the District Engineer and the City of Victoria's Engineer. The analysis was conducted using GIS to determine the percentage of each parcel that intersects with the boundary that lies with MCWD and CCWMO. All parcels with greater than half of their land area within MCWD are assigned thereto, and those with less are assigned to Carver County.

A complete list of parcels being reassigned is provided in attachment A. CCWMO has further developed an interactive map which shows the parcels and their percentage within each watershed. That can be accessed through the following link:

<https://carver.maps.arcgis.com/apps/webappviewer/index.html?id=2dc4f5c2b74b4be98c2455288ce68d50>

The petition will propose similar adjustments of the CCWMO/RPBCWD common boundary. No adjustments of the MCWD/RPBCWD common boundary are proposed.

Attachments:

- Attachment A: Parcels to be reassigned
- Attachment B: Map of applicable area

RESOLUTION

RESOLUTION NUMBER: 17-031

TITLE: **Resolution Supporting Boundary Adjustment Between Carver County Water Management Organization and Minnehaha Creek Watershed District**

WHEREAS, as a result of the recent generation of more precise topographic data, the common hydrologic boundary of the Carver County Watershed Management Organization (CCWMO) and the Minnehaha Creek Watershed District (MCWD) can be more precisely ascertained; and

WHEREAS, these improved data and the ongoing subdivision and development of land allow for the common legal boundary of these watersheds to more closely follow the hydrologic boundary; and

WHEREAS, the purpose of Minnesota Statutes Chapters 103B and 103D is to facilitate water resource management on a watershed basis, and the legal boundaries of watershed management organizations should conform as closely as is practicable to hydrologic boundaries; and

WHEREAS, Minnesota Statutes establishes a procedure for petition to the Minnesota Board of Water and Soil Resources (BWSR) to adjust watershed management organization boundaries; and

WHEREAS, the parcels changing watersheds are listed on Exhibit A are proposed in each exhibit to be allocated to CCWMO and MCWD; and

WHEREAS, the parcels to be allocated to each watershed management organization are contiguous to each, and the alteration of the legal boundary of each watershed to include the identified parcels will advance the purposes of Minnesota Statutes Chapters 103B and 103D;

WHEREAS, at the MWCD Board Meeting dated April 27, 2017 it was moved by Manager Shekleton, seconded by Manager Olson and passed 7 ayes, 0 nays, and 0 abstentions that this resolution be forwarded to the next Board Meeting for final action.

NOW, THEREFORE, BE IT RESOLVED that the Board of Managers supports a boundary adjustment as described in Exhibit A, and authorizes the Board President, on advice of counsel, to sign a petition to BWSR in accordance with Minnesota Statutes to adjust the common boundary of the CCWMO and MCWD.

BE IT FURTHER RESOLVED that the MCWD Administrator is authorized to fulfill all responsibilities of the MCWD to implement the boundary adjustment as approved by BWSR.

Resolution Number 17-031 was moved by Manager _____, seconded by Manager _____.
Motion to adopt the resolution ___ ayes, ___ nays, ___ abstentions. Date: _____.

Secretary Date: _____

**DRAFT for discussion purposes only and subject to Board approval and the availability of funds.
Resolutions are not final until approved by the Board and signed by the Board Secretary.**

Exhibit A: Parcel List

PID	Current Watershed District	Proposed Watershed District
653180310	WS 062 MINNEHAHA CREEK	WS 067 CARVER CO WMO
653180300	WS 062 MINNEHAHA CREEK	WS 067 CARVER CO WMO
652620170	WS 062 MINNEHAHA CREEK	WS 067 CARVER CO WMO
653180350	WS 062 MINNEHAHA CREEK	WS 067 CARVER CO WMO
653180340	WS 062 MINNEHAHA CREEK	WS 067 CARVER CO WMO
653181020	WS 062 MINNEHAHA CREEK	WS 067 CARVER CO WMO
653181050	WS 062 MINNEHAHA CREEK	WS 067 CARVER CO WMO
653181170	WS 062 MINNEHAHA CREEK	WS 067 CARVER CO WMO
653181130	WS 062 MINNEHAHA CREEK	WS 067 CARVER CO WMO
653181090	WS 062 MINNEHAHA CREEK	WS 067 CARVER CO WMO
653181060	WS 062 MINNEHAHA CREEK	WS 067 CARVER CO WMO
653181180	WS 062 MINNEHAHA CREEK	WS 067 CARVER CO WMO
070180810	WS 067 CARVER CO WMO	WS 062 MINNEHAHA CREEK
070180800	WS 067 CARVER CO WMO	WS 062 MINNEHAHA CREEK
071320020	WS 067 CARVER CO WMO	WS 062 MINNEHAHA CREEK
655600030	WS 062 MINNEHAHA CREEK	WS 067 CARVER CO WMO
655600040	WS 062 MINNEHAHA CREEK	WS 067 CARVER CO WMO
070170600	WS 062 MINNEHAHA CREEK	WS 067 CARVER CO WMO
652620320	WS 062 MINNEHAHA CREEK	WS 067 CARVER CO WMO
652620540	WS 062 MINNEHAHA CREEK	WS 067 CARVER CO WMO
652620050	WS 062 MINNEHAHA CREEK	WS 067 CARVER CO WMO
652620040	WS 062 MINNEHAHA CREEK	WS 067 CARVER CO WMO
652620400	WS 062 MINNEHAHA CREEK	WS 067 CARVER CO WMO
652620010	WS 062 MINNEHAHA CREEK	WS 067 CARVER CO WMO
070200600	WS 067 CARVER CO WMO	WS 062 MINNEHAHA CREEK
070211310	WS 062 MINNEHAHA CREEK	WS 067 CARVER CO WMO
653180120	WS 062 MINNEHAHA CREEK	WS 067 CARVER CO WMO
653180100	WS 062 MINNEHAHA CREEK	WS 067 CARVER CO WMO
653180110	WS 062 MINNEHAHA CREEK	WS 067 CARVER CO WMO
653180130	WS 062 MINNEHAHA CREEK	WS 067 CARVER CO WMO
653180160	WS 062 MINNEHAHA CREEK	WS 067 CARVER CO WMO
653180140	WS 062 MINNEHAHA CREEK	WS 067 CARVER CO WMO
653180150	WS 062 MINNEHAHA CREEK	WS 067 CARVER CO WMO
653180280	WS 062 MINNEHAHA CREEK	WS 067 CARVER CO WMO
653180240	WS 062 MINNEHAHA CREEK	WS 067 CARVER CO WMO
653180210	WS 062 MINNEHAHA CREEK	WS 067 CARVER CO WMO
653180270	WS 062 MINNEHAHA CREEK	WS 067 CARVER CO WMO
653180320	WS 062 MINNEHAHA CREEK	WS 067 CARVER CO WMO
653180290	WS 062 MINNEHAHA CREEK	WS 067 CARVER CO WMO
653180360	WS 062 MINNEHAHA CREEK	WS 067 CARVER CO WMO
653180330	WS 062 MINNEHAHA CREEK	WS 067 CARVER CO WMO
653181140	WS 062 MINNEHAHA CREEK	WS 067 CARVER CO WMO
653181100	WS 062 MINNEHAHA CREEK	WS 067 CARVER CO WMO
653181190	WS 062 MINNEHAHA CREEK	WS 067 CARVER CO WMO
653181150	WS 062 MINNEHAHA CREEK	WS 067 CARVER CO WMO
653181070	WS 062 MINNEHAHA CREEK	WS 067 CARVER CO WMO

Exhibit A: Parcel List

PID	Current Watershed District	Proposed Watershed District
653181110	WS 062 MINNEHAHA CREEK	WS 067 CARVER CO WMO
653180430	WS 062 MINNEHAHA CREEK	WS 067 CARVER CO WMO
653180420	WS 062 MINNEHAHA CREEK	WS 067 CARVER CO WMO
653181200	WS 062 MINNEHAHA CREEK	WS 067 CARVER CO WMO
653181160	WS 062 MINNEHAHA CREEK	WS 067 CARVER CO WMO
653181080	WS 062 MINNEHAHA CREEK	WS 067 CARVER CO WMO
653181120	WS 062 MINNEHAHA CREEK	WS 067 CARVER CO WMO
653170520	WS 062 MINNEHAHA CREEK	WS 067 CARVER CO WMO
653170480	WS 062 MINNEHAHA CREEK	WS 067 CARVER CO WMO
077250080	WS 062 MINNEHAHA CREEK	WS 067 CARVER CO WMO
653150110	WS 062 MINNEHAHA CREEK	WS 067 CARVER CO WMO
071320032	WS 067 CARVER CO WMO	WS 062 MINNEHAHA CREEK
653170490	WS 062 MINNEHAHA CREEK	WS 067 CARVER CO WMO
653170360	WS 062 MINNEHAHA CREEK	WS 067 CARVER CO WMO
070210300	WS 062 MINNEHAHA CREEK	WS 067 CARVER CO WMO
653170470	WS 062 MINNEHAHA CREEK	WS 067 CARVER CO WMO
653170460	WS 062 MINNEHAHA CREEK	WS 067 CARVER CO WMO
653170450	WS 062 MINNEHAHA CREEK	WS 067 CARVER CO WMO
653170550	WS 062 MINNEHAHA CREEK	WS 067 CARVER CO WMO
653170540	WS 062 MINNEHAHA CREEK	WS 067 CARVER CO WMO
653170530	WS 062 MINNEHAHA CREEK	WS 067 CARVER CO WMO
653150140	WS 062 MINNEHAHA CREEK	WS 067 CARVER CO WMO
077500090	WS 062 MINNEHAHA CREEK	WS 067 CARVER CO WMO
077500050	WS 062 MINNEHAHA CREEK	WS 067 CARVER CO WMO
077250010	WS 062 MINNEHAHA CREEK	WS 067 CARVER CO WMO
077500070	WS 062 MINNEHAHA CREEK	WS 067 CARVER CO WMO
077250070	WS 062 MINNEHAHA CREEK	WS 067 CARVER CO WMO
070600070	WS 062 MINNEHAHA CREEK	WS 067 CARVER CO WMO
077250050	WS 062 MINNEHAHA CREEK	WS 067 CARVER CO WMO
077250060	WS 062 MINNEHAHA CREEK	WS 067 CARVER CO WMO
070281000	WS 062 MINNEHAHA CREEK	WS 067 CARVER CO WMO
653170660	WS 062 MINNEHAHA CREEK	WS 067 CARVER CO WMO
077250020	WS 062 MINNEHAHA CREEK	WS 067 CARVER CO WMO
077250030	WS 062 MINNEHAHA CREEK	WS 067 CARVER CO WMO
070281010	WS 062 MINNEHAHA CREEK	WS 067 CARVER CO WMO
077250040	WS 062 MINNEHAHA CREEK	WS 067 CARVER CO WMO
070270300	WS 062 MINNEHAHA CREEK	WS 067 CARVER CO WMO
653150130	WS 062 MINNEHAHA CREEK	WS 067 CARVER CO WMO
653150120	WS 062 MINNEHAHA CREEK	WS 067 CARVER CO WMO
653150200	WS 062 MINNEHAHA CREEK	WS 067 CARVER CO WMO
652620130	WS 062 MINNEHAHA CREEK	WS 067 CARVER CO WMO
652620180	WS 062 MINNEHAHA CREEK	WS 067 CARVER CO WMO
652620100	WS 062 MINNEHAHA CREEK	WS 067 CARVER CO WMO
652620360	WS 062 MINNEHAHA CREEK	WS 067 CARVER CO WMO
655600050	WS 062 MINNEHAHA CREEK	WS 067 CARVER CO WMO
652620280	WS 062 MINNEHAHA CREEK	WS 067 CARVER CO WMO

Exhibit A: Parcel List

PID	Current Watershed District	Proposed Watershed District
652620270	WS 062 MINNEHAHA CREEK	WS 067 CARVER CO WMO
652620260	WS 062 MINNEHAHA CREEK	WS 067 CARVER CO WMO
652630010	WS 062 MINNEHAHA CREEK	WS 067 CARVER CO WMO
652620190	WS 062 MINNEHAHA CREEK	WS 067 CARVER CO WMO
652630020	WS 062 MINNEHAHA CREEK	WS 067 CARVER CO WMO
652620240	WS 062 MINNEHAHA CREEK	WS 067 CARVER CO WMO
652620230	WS 062 MINNEHAHA CREEK	WS 067 CARVER CO WMO
652620160	WS 062 MINNEHAHA CREEK	WS 067 CARVER CO WMO
652620140	WS 062 MINNEHAHA CREEK	WS 067 CARVER CO WMO
652620290	WS 062 MINNEHAHA CREEK	WS 067 CARVER CO WMO
652620300	WS 062 MINNEHAHA CREEK	WS 067 CARVER CO WMO
652620080	WS 062 MINNEHAHA CREEK	WS 067 CARVER CO WMO
652620310	WS 062 MINNEHAHA CREEK	WS 067 CARVER CO WMO
652620480	WS 062 MINNEHAHA CREEK	WS 067 CARVER CO WMO
652620500	WS 062 MINNEHAHA CREEK	WS 067 CARVER CO WMO
652620470	WS 062 MINNEHAHA CREEK	WS 067 CARVER CO WMO
652620460	WS 062 MINNEHAHA CREEK	WS 067 CARVER CO WMO
652620070	WS 062 MINNEHAHA CREEK	WS 067 CARVER CO WMO
652620510	WS 062 MINNEHAHA CREEK	WS 067 CARVER CO WMO
652620060	WS 062 MINNEHAHA CREEK	WS 067 CARVER CO WMO
652620520	WS 062 MINNEHAHA CREEK	WS 067 CARVER CO WMO
652620530	WS 062 MINNEHAHA CREEK	WS 067 CARVER CO WMO
652620550	WS 062 MINNEHAHA CREEK	WS 067 CARVER CO WMO
652620440	WS 062 MINNEHAHA CREEK	WS 067 CARVER CO WMO
652620350	WS 062 MINNEHAHA CREEK	WS 067 CARVER CO WMO
652620430	WS 062 MINNEHAHA CREEK	WS 067 CARVER CO WMO
652620560	WS 062 MINNEHAHA CREEK	WS 067 CARVER CO WMO
652620370	WS 062 MINNEHAHA CREEK	WS 067 CARVER CO WMO
652620030	WS 062 MINNEHAHA CREEK	WS 067 CARVER CO WMO
652620380	WS 062 MINNEHAHA CREEK	WS 067 CARVER CO WMO
652620570	WS 062 MINNEHAHA CREEK	WS 067 CARVER CO WMO
652620390	WS 062 MINNEHAHA CREEK	WS 067 CARVER CO WMO
652620020	WS 062 MINNEHAHA CREEK	WS 067 CARVER CO WMO
652620420	WS 062 MINNEHAHA CREEK	WS 067 CARVER CO WMO
652620250	WS 062 MINNEHAHA CREEK	WS 067 CARVER CO WMO
652620120	WS 062 MINNEHAHA CREEK	WS 067 CARVER CO WMO
652620110	WS 062 MINNEHAHA CREEK	WS 067 CARVER CO WMO
652620220	WS 062 MINNEHAHA CREEK	WS 067 CARVER CO WMO
652620150	WS 062 MINNEHAHA CREEK	WS 067 CARVER CO WMO
652620090	WS 062 MINNEHAHA CREEK	WS 067 CARVER CO WMO
652620490	WS 062 MINNEHAHA CREEK	WS 067 CARVER CO WMO
652620450	WS 062 MINNEHAHA CREEK	WS 067 CARVER CO WMO
652620330	WS 062 MINNEHAHA CREEK	WS 067 CARVER CO WMO
652620340	WS 062 MINNEHAHA CREEK	WS 067 CARVER CO WMO
652620410	WS 062 MINNEHAHA CREEK	WS 067 CARVER CO WMO
653181210	WS 062 MINNEHAHA CREEK	WS 067 CARVER CO WMO

Exhibit A: Parcel List

PID	Current Watershed District	Proposed Watershed District
070171100	WS 062 MINNEHAHA CREEK	WS 067 CARVER CO WMO
070170910	WS 062 MINNEHAHA CREEK	WS 067 CARVER CO WMO
250170100	WS 067 CARVER CO WMO	WS 062 MINNEHAHA CREEK
075400010	WS 062 MINNEHAHA CREEK	WS 067 CARVER CO WMO
075400030	WS 062 MINNEHAHA CREEK	WS 067 CARVER CO WMO
075400020	WS 062 MINNEHAHA CREEK	WS 067 CARVER CO WMO
070170800	WS 062 MINNEHAHA CREEK	WS 067 CARVER CO WMO
070170700	WS 062 MINNEHAHA CREEK	WS 067 CARVER CO WMO
070171200	WS 067 CARVER CO WMO	WS 062 MINNEHAHA CREEK
070201100	WS 067 CARVER CO WMO	WS 062 MINNEHAHA CREEK
070211100	WS 062 MINNEHAHA CREEK	WS 067 CARVER CO WMO
653180090	WS 062 MINNEHAHA CREEK	WS 067 CARVER CO WMO
653180200	WS 062 MINNEHAHA CREEK	WS 067 CARVER CO WMO
653180170	WS 062 MINNEHAHA CREEK	WS 067 CARVER CO WMO
653180190	WS 062 MINNEHAHA CREEK	WS 067 CARVER CO WMO
653180180	WS 062 MINNEHAHA CREEK	WS 067 CARVER CO WMO
653180250	WS 062 MINNEHAHA CREEK	WS 067 CARVER CO WMO
653180260	WS 062 MINNEHAHA CREEK	WS 067 CARVER CO WMO
653180230	WS 062 MINNEHAHA CREEK	WS 067 CARVER CO WMO
653180220	WS 062 MINNEHAHA CREEK	WS 067 CARVER CO WMO
653181250	WS 062 MINNEHAHA CREEK	WS 067 CARVER CO WMO
653181030	WS 062 MINNEHAHA CREEK	WS 067 CARVER CO WMO
070210400	WS 062 MINNEHAHA CREEK	WS 067 CARVER CO WMO
653180390	WS 062 MINNEHAHA CREEK	WS 067 CARVER CO WMO
653180370	WS 062 MINNEHAHA CREEK	WS 067 CARVER CO WMO
653180440	WS 062 MINNEHAHA CREEK	WS 067 CARVER CO WMO
653180410	WS 062 MINNEHAHA CREEK	WS 067 CARVER CO WMO
653180380	WS 062 MINNEHAHA CREEK	WS 067 CARVER CO WMO
653170640	WS 062 MINNEHAHA CREEK	WS 067 CARVER CO WMO
653170300	WS 062 MINNEHAHA CREEK	WS 067 CARVER CO WMO
653170650	WS 062 MINNEHAHA CREEK	WS 067 CARVER CO WMO
653170380	WS 062 MINNEHAHA CREEK	WS 067 CARVER CO WMO
653170310	WS 062 MINNEHAHA CREEK	WS 067 CARVER CO WMO
653170390	WS 062 MINNEHAHA CREEK	WS 067 CARVER CO WMO
653170330	WS 062 MINNEHAHA CREEK	WS 067 CARVER CO WMO
072000090	WS 062 MINNEHAHA CREEK	WS 067 CARVER CO WMO
653170340	WS 062 MINNEHAHA CREEK	WS 067 CARVER CO WMO
653170420	WS 062 MINNEHAHA CREEK	WS 067 CARVER CO WMO
653170670	WS 062 MINNEHAHA CREEK	WS 067 CARVER CO WMO
653170430	WS 062 MINNEHAHA CREEK	WS 067 CARVER CO WMO
653170350	WS 062 MINNEHAHA CREEK	WS 067 CARVER CO WMO
653170500	WS 062 MINNEHAHA CREEK	WS 067 CARVER CO WMO
653170440	WS 062 MINNEHAHA CREEK	WS 067 CARVER CO WMO
070180700	WS 067 CARVER CO WMO	WS 062 MINNEHAHA CREEK
070170710	WS 062 MINNEHAHA CREEK	WS 067 CARVER CO WMO
653181230	WS 062 MINNEHAHA CREEK	WS 067 CARVER CO WMO

Exhibit A: Parcel List

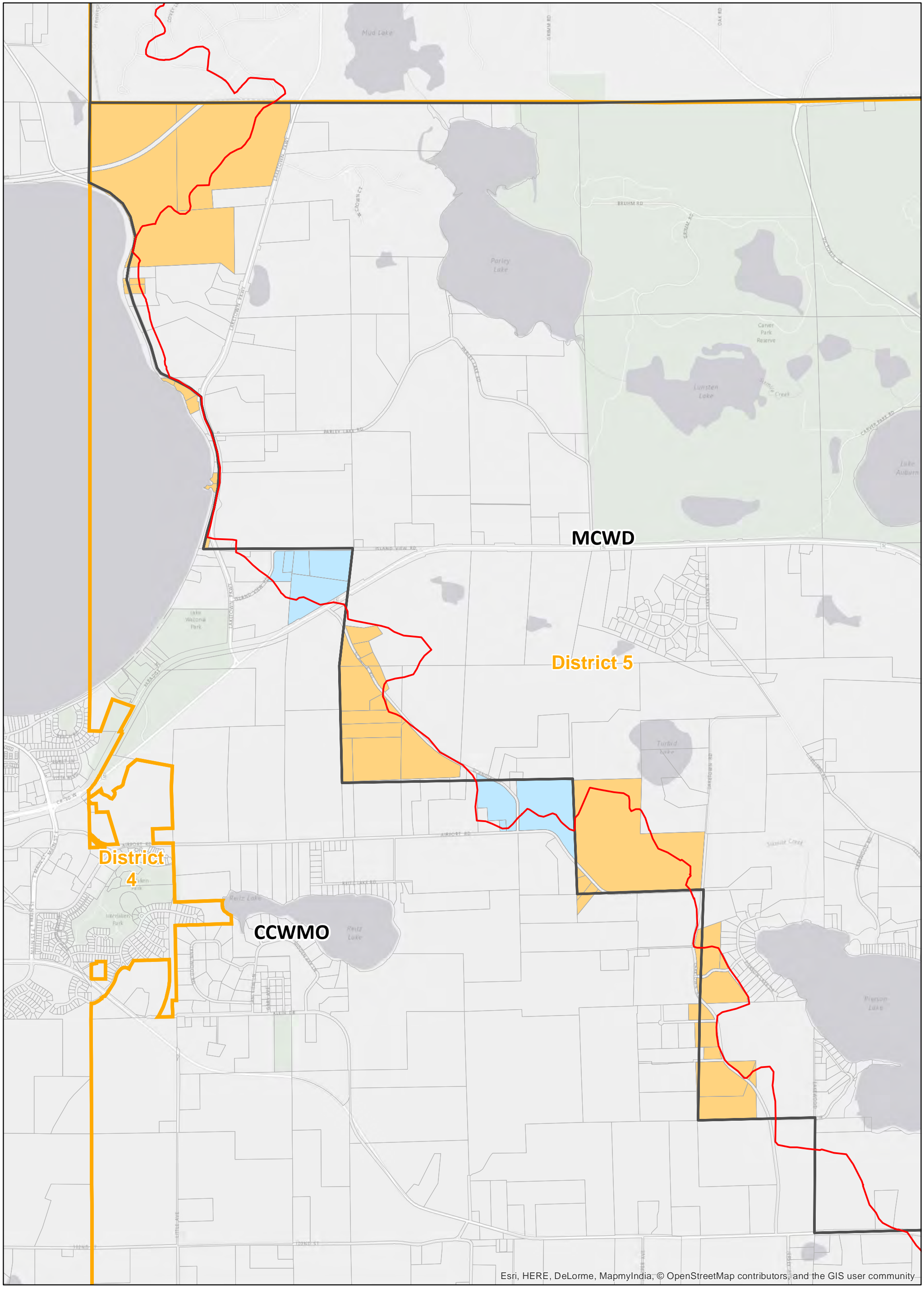
PID	Current Watershed District	Proposed Watershed District
653181040	WS 062 MINNEHAHA CREEK	WS 067 CARVER CO WMO
653180400	WS 062 MINNEHAHA CREEK	WS 067 CARVER CO WMO
653170370	WS 062 MINNEHAHA CREEK	WS 067 CARVER CO WMO
653170320	WS 062 MINNEHAHA CREEK	WS 067 CARVER CO WMO
653170400	WS 062 MINNEHAHA CREEK	WS 067 CARVER CO WMO
653170410	WS 062 MINNEHAHA CREEK	WS 067 CARVER CO WMO
653170510	WS 062 MINNEHAHA CREEK	WS 067 CARVER CO WMO
653170630	WS 062 MINNEHAHA CREEK	WS 067 CARVER CO WMO
653170610	WS 062 MINNEHAHA CREEK	WS 067 CARVER CO WMO
655600060	WS 062 MINNEHAHA CREEK	WS 067 CARVER CO WMO
650180200	WS 062 MINNEHAHA CREEK	WS 067 CARVER CO WMO
650180310	WS 062 MINNEHAHA CREEK	WS 067 CARVER CO WMO
070071100	WS 062 MINNEHAHA CREEK	WS 067 CARVER CO WMO
070071210	WS 062 MINNEHAHA CREEK	WS 067 CARVER CO WMO
070070400	WS 062 MINNEHAHA CREEK	WS 067 CARVER CO WMO
070071000	WS 062 MINNEHAHA CREEK	WS 067 CARVER CO WMO
070060100	WS 062 MINNEHAHA CREEK	WS 067 CARVER CO WMO
653130180	WS 062 MINNEHAHA CREEK	WS 067 CARVER CO WMO
653130190	WS 062 MINNEHAHA CREEK	WS 067 CARVER CO WMO
653130170	WS 062 MINNEHAHA CREEK	WS 067 CARVER CO WMO
653130200	WS 062 MINNEHAHA CREEK	WS 067 CARVER CO WMO
653130220	WS 062 MINNEHAHA CREEK	WS 067 CARVER CO WMO
653130230	WS 062 MINNEHAHA CREEK	WS 067 CARVER CO WMO
653130210	WS 062 MINNEHAHA CREEK	WS 067 CARVER CO WMO
653130240	WS 062 MINNEHAHA CREEK	WS 067 CARVER CO WMO
653130160	WS 062 MINNEHAHA CREEK	WS 067 CARVER CO WMO
653130150	WS 062 MINNEHAHA CREEK	WS 067 CARVER CO WMO
653130140	WS 062 MINNEHAHA CREEK	WS 067 CARVER CO WMO
653130130	WS 062 MINNEHAHA CREEK	WS 067 CARVER CO WMO
653130120	WS 062 MINNEHAHA CREEK	WS 067 CARVER CO WMO
653130110	WS 062 MINNEHAHA CREEK	WS 067 CARVER CO WMO
653130100	WS 062 MINNEHAHA CREEK	WS 067 CARVER CO WMO
653180480	WS 062 MINNEHAHA CREEK	WS 067 CARVER CO WMO
653180470	WS 062 MINNEHAHA CREEK	WS 067 CARVER CO WMO
653180460	WS 062 MINNEHAHA CREEK	WS 067 CARVER CO WMO
653180450	WS 062 MINNEHAHA CREEK	WS 067 CARVER CO WMO
653180530	WS 062 MINNEHAHA CREEK	WS 067 CARVER CO WMO
653180540	WS 062 MINNEHAHA CREEK	WS 067 CARVER CO WMO
653180550	WS 062 MINNEHAHA CREEK	WS 067 CARVER CO WMO
653180560	WS 062 MINNEHAHA CREEK	WS 067 CARVER CO WMO
652630030	WS 062 MINNEHAHA CREEK	WS 067 CARVER CO WMO
070252110	WS 062 MINNEHAHA CREEK	WS 067 CARVER CO WMO
653170680	WS 062 MINNEHAHA CREEK	WS 067 CARVER CO WMO
650240300	WS 067 CARVER CO WMO	WS 062 MINNEHAHA CREEK
070071400	WS 062 MINNEHAHA CREEK	WS 067 CARVER CO WMO
070252300	WS 062 MINNEHAHA CREEK	WS 067 CARVER CO WMO

Exhibit A: Parcel List

PID	Current Watershed District	Proposed Watershed District
070070700	WS 062 MINNEHAHA CREEK	WS 067 CARVER CO WMO
070260800	WS 062 MINNEHAHA CREEK	WS 067 CARVER CO WMO
650136500	WS 062 MINNEHAHA CREEK	WS 067 CARVER CO WMO
070060900	WS 062 MINNEHAHA CREEK	WS 067 CARVER CO WMO
070211500	WS 062 MINNEHAHA CREEK	WS 067 CARVER CO WMO
070211300	WS 062 MINNEHAHA CREEK	WS 067 CARVER CO WMO
655600020	WS 062 MINNEHAHA CREEK	WS 067 CARVER CO WMO
655600012	WS 062 MINNEHAHA CREEK	WS 067 CARVER CO WMO
650250600	WS 062 MINNEHAHA CREEK	WS 067 CARVER CO WMO
652620580	WS 062 MINNEHAHA CREEK	WS 067 CARVER CO WMO
652620581	WS 062 MINNEHAHA CREEK	WS 067 CARVER CO WMO
650180340	WS 062 MINNEHAHA CREEK	WS 067 CARVER CO WMO
650180330	WS 062 MINNEHAHA CREEK	WS 067 CARVER CO WMO
070060610	WS 062 MINNEHAHA CREEK	WS 067 CARVER CO WMO
070170900	WS 062 MINNEHAHA CREEK	WS 067 CARVER CO WMO
653140110	WS 062 MINNEHAHA CREEK	WS 067 CARVER CO WMO
653130090	WS 062 MINNEHAHA CREEK	WS 067 CARVER CO WMO
653140120	WS 062 MINNEHAHA CREEK	WS 067 CARVER CO WMO
653140130	WS 062 MINNEHAHA CREEK	WS 067 CARVER CO WMO
653130010	WS 062 MINNEHAHA CREEK	WS 067 CARVER CO WMO
653130030	WS 062 MINNEHAHA CREEK	WS 067 CARVER CO WMO
653130040	WS 062 MINNEHAHA CREEK	WS 067 CARVER CO WMO
653130050	WS 062 MINNEHAHA CREEK	WS 067 CARVER CO WMO
653130080	WS 062 MINNEHAHA CREEK	WS 067 CARVER CO WMO
653130250	WS 062 MINNEHAHA CREEK	WS 067 CARVER CO WMO
653140140	WS 062 MINNEHAHA CREEK	WS 067 CARVER CO WMO
653130070	WS 062 MINNEHAHA CREEK	WS 067 CARVER CO WMO
653130020	WS 062 MINNEHAHA CREEK	WS 067 CARVER CO WMO
653130060	WS 062 MINNEHAHA CREEK	WS 067 CARVER CO WMO
653150190	WS 062 MINNEHAHA CREEK	WS 067 CARVER CO WMO
301570010	WS 062 MINNEHAHA CREEK	WS 067 CARVER CO WMO
301570020	WS 062 MINNEHAHA CREEK	WS 067 CARVER CO WMO
077250100	WS 062 MINNEHAHA CREEK	WS 067 CARVER CO WMO
654690010	WS 062 MINNEHAHA CREEK	WS 067 CARVER CO WMO
070252810	WS 062 MINNEHAHA CREEK	WS 067 CARVER CO WMO
650250700	WS 062 MINNEHAHA CREEK	WS 067 CARVER CO WMO
070252601	WS 062 MINNEHAHA CREEK	WS 067 CARVER CO WMO
650250900	WS 067 CARVER CO WMO	WS 062 MINNEHAHA CREEK
070260700	WS 062 MINNEHAHA CREEK	WS 067 CARVER CO WMO
250170600	WS 067 CARVER CO WMO	WS 062 MINNEHAHA CREEK
300170700	WS 067 CARVER CO WMO	WS 062 MINNEHAHA CREEK
250170300	WS 067 CARVER CO WMO	WS 062 MINNEHAHA CREEK
070170500	WS 062 MINNEHAHA CREEK	WS 067 CARVER CO WMO
070170500	WS 062 MINNEHAHA CREEK	WS 067 CARVER CO WMO
650180320	WS 062 MINNEHAHA CREEK	WS 067 CARVER CO WMO
070341700	WS 067 CARVER CO WMO	WS 062 MINNEHAHA CREEK

Exhibit A: Parcel List

PID	Current Watershed District	Proposed Watershed District
652010130	WS 067 CARVER CO WMO	WS 062 MINNEHAHA CREEK
652010150	WS 067 CARVER CO WMO	WS 062 MINNEHAHA CREEK
652010440	WS 067 CARVER CO WMO	WS 062 MINNEHAHA CREEK
652010390	WS 067 CARVER CO WMO	WS 062 MINNEHAHA CREEK
652010330	WS 067 CARVER CO WMO	WS 062 MINNEHAHA CREEK
652010160	WS 067 CARVER CO WMO	WS 062 MINNEHAHA CREEK
652010070	WS 067 CARVER CO WMO	WS 062 MINNEHAHA CREEK
652010350	WS 067 CARVER CO WMO	WS 062 MINNEHAHA CREEK
652010370	WS 067 CARVER CO WMO	WS 062 MINNEHAHA CREEK
652010120	WS 067 CARVER CO WMO	WS 062 MINNEHAHA CREEK
652010400	WS 067 CARVER CO WMO	WS 062 MINNEHAHA CREEK
652010030	WS 067 CARVER CO WMO	WS 062 MINNEHAHA CREEK
652010340	WS 067 CARVER CO WMO	WS 062 MINNEHAHA CREEK
652010060	WS 067 CARVER CO WMO	WS 062 MINNEHAHA CREEK
652010050	WS 067 CARVER CO WMO	WS 062 MINNEHAHA CREEK
652010170	WS 067 CARVER CO WMO	WS 062 MINNEHAHA CREEK
652010140	WS 067 CARVER CO WMO	WS 062 MINNEHAHA CREEK
652010020	WS 067 CARVER CO WMO	WS 062 MINNEHAHA CREEK
652010010	WS 067 CARVER CO WMO	WS 062 MINNEHAHA CREEK
652010040	WS 067 CARVER CO WMO	WS 062 MINNEHAHA CREEK
652010380	WS 067 CARVER CO WMO	WS 062 MINNEHAHA CREEK
652010360	WS 067 CARVER CO WMO	WS 062 MINNEHAHA CREEK



Esri, HERE, DeLorme, MapmyIndia, © OpenStreetMap contributors, and the GIS user community

Legend

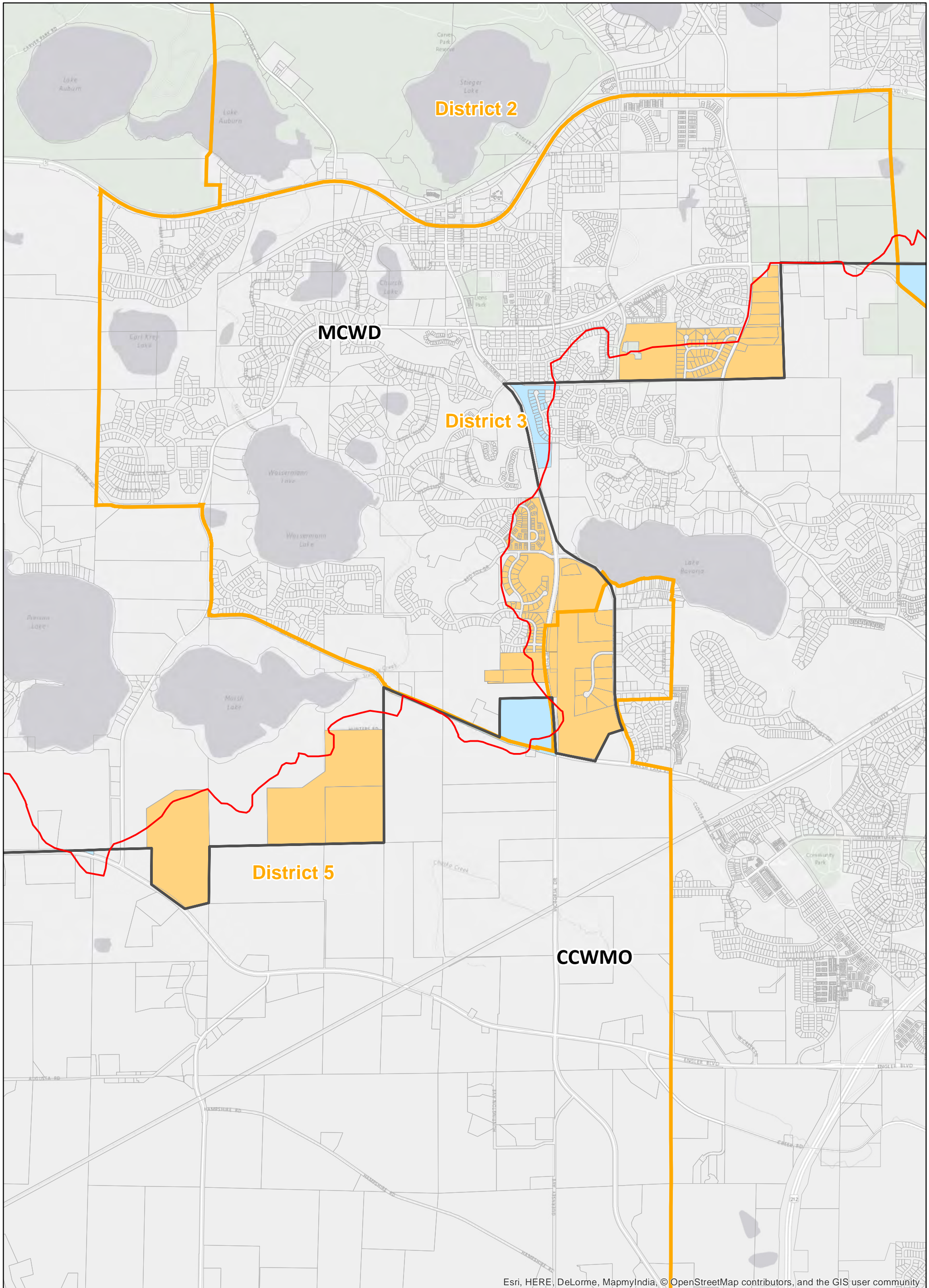
- Affected Parcels (DRAFT)
 - Switch to CCWMO
 - Switch to MCWD
 - Switch to RPBCWD
 - Hydrologic Boundary (MCWD)
 - Hydrologic Boundary (RPBCWD)
 - Current Tax Boundary
 - Commissioner Districts
 - Parcel Boundaries



1 inch = 2,000 feet

**CCWMO-MCWD-RPBCWD
Boundary Change -
DRAFT**


January 17, 2017



Esri, HERE, DeLorme, MapmyIndia, © OpenStreetMap contributors, and the GIS user community

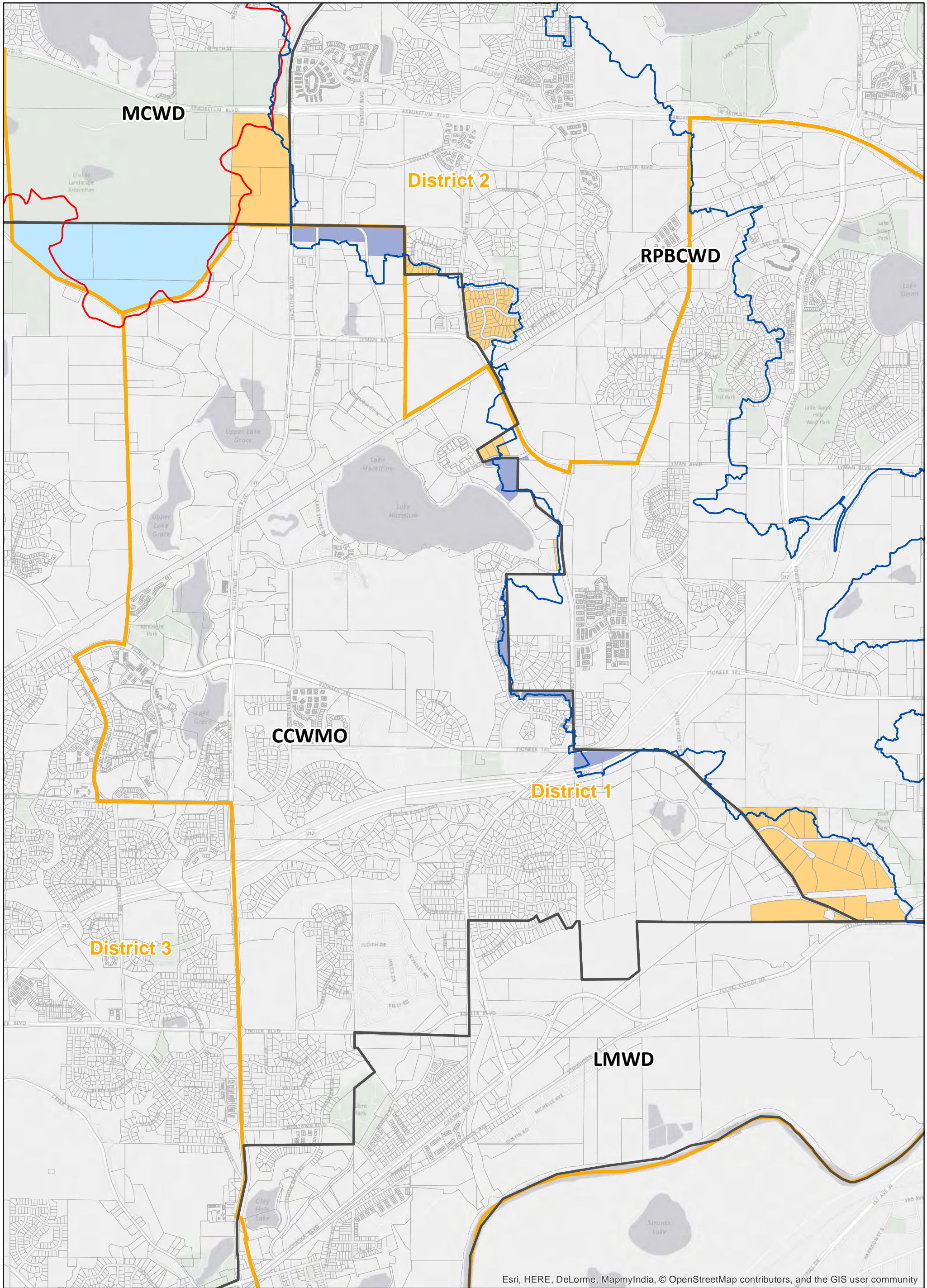
Legend

Affected Parcels (DRAFT)	Hydrologic Boundary (MCWD)	Parcel Boundaries
Switch to CCWMO	Hydrologic Boundary (RPBCWD)	
Switch to MCWD	Current Tax Boundary	
Switch to RPBCWD	Commissioner Districts	


 1 inch = 2,000 feet

**CCWMO-MCWD-RPBCWD
 Boundary Change -
 DRAFT**


 January 17, 2017



Esri, HERE, DeLorme, MapmyIndia, © OpenStreetMap contributors, and the GIS user community

Legend

Affected Parcels (DRAFT)	Hydrologic Boundary (MCWD)	Parcel Boundaries
Switch to CCWMO	Hydrologic Boundary (RPBCWD)	
Switch to MCWD	Current Tax Boundary	
Switch to RPBCWD	Commissioner Districts	


 1 inch = 2,000 feet

**CCWMO-MCWD-RPBCWD
 Boundary Change -
 DRAFT**

 January 17, 2017