



**Qualifications for**  
**SIX MILE SUBWATERSHED PLANNING**  
**MINNEHAHA CREEK WATERSHED DISTRICT**

Prepared by Hoisington Koegler Group Inc. and Loam, Inc.

April 2016





## CONTENTS

01 INTRODUCTION .....	1
02 PROJECT TEAM .....	2
03 PROJECT EXPERIENCE .....	7
04 REFERENCES .....	14
05 APPENDIX - RESUMES .....	15

*Cover Photo: Steiger Lake, Victoria, Minnesota*



Hoisington Koegler Group Inc.  
 Landscape Architecture  
 Planning  
 Urban Design

123 N. 3rd Street, Suite 100  
 Minneapolis, MN 55401  
 612-338-0800

COLLABORATE  
 LISTEN  
 EXPLORE  
 CREATE

*HKGi believes that design, when inspired by the character of the people and the land, can create a unique and identifiable sense of community.*

April 15, 2016

Ms. Anna Brown  
 Minnehaha Creek Watershed District  
 15320 Minnetonka Boulevard  
 Minnetonka, MN 55345

Re: Six Mile Subwatershed Planning Project

Dear Ms. Brown:

Hoisington Koegler Group Inc. (HKGi) is pleased to submit this proposal for professional services to assist the Minnehaha Creek Watershed District in the development of a multi-jurisdictional plan for the Six Mile Subwatershed. As planners and landscape architects, our team brings the needed combination of experience, skills, and knowledge in cross-agency collaboration, natural resources planning, comprehensive planning, regional, area and site master planning, and landscape architecture to develop a subwatershed plan that can preserve and restore natural systems while boosting the social and economic vitality of local communities.

In order to best address the needs of the Six Mile Subwatershed planning area, HKGi will be teaming with Loam, an urban design studio that focuses on strategic implementation of complex urban initiatives. As the prime firm, HKGi will manage the project and take the lead with the technical advisory committee, steering committee, and stakeholder/agency engagement. Loam will contribute its expertise to the development of regional, area and site master plans and the identification of implementation strategies.

The HKGi team has extensive experience in a wide range of planning that will contribute to the successful development of a multi-jurisdictional plan for the Six Mile Subwatershed. This experience includes more than two dozen comprehensive plans for communities of all sizes across the region; ten greenway/corridor plans that seek to integrate natural resources, recreation, transportation, and water quality; and numerous, large scale multi-jurisdiction planning projects that involved local, regional, and state agencies.

The information in this statement of qualifications describes our interest in this project, the individuals who will comprise our team, and examples of projects that demonstrate our expertise. We are truly excited about the opportunity to work with Minnehaha Creek Watershed District to apply its adopted policy framework *In Pursuit of a Balanced Urban Ecology* to the Six Mile Subwatershed. Thank you for the opportunity to present this statement of qualifications.

Sincerely,

Mark Koegler, ASLA, PLA  
 CEO

Rita Trapp  
 Project Manager

# INTRODUCTION



Photos from Victoria, within the Six Mile Subwatershed District

The Six Mile Subwatershed planning project has been positioned by the Minnehaha Creek Watershed District as a model for innovative watershed planning that derives the greatest value from direct capital improvements by promoting the ecological health of the surrounding landscape. As expressed in the 2014 report *In Pursuit of a Balanced Urban Ecology*, the Minnehaha Creek Watershed District has embarked on the next exciting chapter of watershed management, one based on ecological systems and stacked benefits.

With the Six Mile project, the MCWD recognizes that the long-term success of direct capital investments in water quality are heavily dependent on wise land management practices carried out by up-watershed property owners. To the extent the MCWD can build positive relationships and provide resources that influence the land management practices of others, they will protect their direct investments as well as strengthen the ecological health of the entire subwatershed.

In addition, the MCWD recognizes that their capital projects provide the opportunity to accomplish much more than water quality improvements alone. If viewed as community investments that address an array of benefits such as water quality, water reuse, recreation, beautification, connectivity, energy generation, etc. a single investment can be designed to carry out a deep stack of benefits. In a phrase frequently used on HKGi's work on Dakota County's greenway system, MCWD projects have great potential to "serve multiple public purposes."

The MCWD's systemic approach is cutting-edge thinking in watershed planning, which is an exciting opportunity for the members of the HKGi/Loam team. For nearly thirty five years, HKGi has been an innovator in community development approaches that position growth initiatives and capital improvements squarely within a context of improved ecological function. Bruce Chamberlain, who helped shape the ecological values of HKGi during his tenure as one of the firm's principals, has carried those values to his subsequent roles with the Minneapolis Park & Recreation Board and his start-up practice, Loam.

As can be seen in numerous community planning and urban design frameworks completed by HKGi over the years, the firm's planners typically invert the traditional land use planning approach. Rather than the typical approach that subjugates ecological systems to other factors and often results in preservation of leftover lands and disconnected open spaces with lower ecological value, HKGi's approach identifies sensitive landscapes that pose opportunities to create a preserved network of open space. Targeted land uses are then "fit" into an ecologically healthy network. The outcome of HKGi's and Loam's approach is an amenity-rich landscape that promotes real estate value, ecological health, and broad community benefits.

The same values in ecological function expressed at the landscape scale carry through to HKGi and Loam's site-scale design work. In the Water Works project on the downtown Minneapolis riverfront, Loam is curating a park development project that infuses a transformative, district-wide rainwater reuse system. HKGi's work developing Dakota County's greenway network extends to trail design on the award-winning River to River Greenway construction in West Saint Paul.

Past and current clients will voice HKGi's and Loam's deeply held value in client/community relationships and professional excellence. Recent collaborations with the MCWD around TSAAP in St. Louis Park and Hopkins and Minnehaha Creek in Minneapolis have been rewarding efforts. These interactions reinforce our confidence that a direct client/consultant relationship with the MCWD will be rewarding and impactful.

## The HKGi/Loam Team



For more than thirty years, **Hoisington Koegler Group (HKGi)** has helped communities and agencies throughout Minnesota and the Upper Midwest create great places for people to live, work and play. HKGi's planners and landscape architects share their design expertise and passion with clients striving to create lasting places of quality. Our professionals provide the type of leadership and skill necessary to develop innovative, efficient solutions that respect and enhance natural systems while responding to economic, cultural, and recreational needs.

A former Vice President of HKGi and a member of the firm for over 20 years, Bruce Chamberlain, founding Principal at **Loam**, is a nationally recognized urban designer and the first Minneapolis Parks Fellow, a seat created by the Minneapolis Parks Foundation to offer a visionary and influential voice at the intersection of city-building and the Next Generation of Parks™. Loam is an urban design studio focused on strategic implementation of complex urban initiatives.

The HKGi/Loam team's planning approach is built around four core principles:

### COLLABORATE

Planning and designing resilient places and great communities requires that people with a variety of skills and perspectives work together to achieve a common vision. Our most successful projects integrate our technical expertise and knowledge with the insight and skills of our clients, partners, and community members.

### LISTEN

Our engagement process builds support for planning and design solutions because of our focus on listening to clients, stakeholders and community members.

### EXPLORE

Our ability to explore a variety of potential opportunities is essential to planning and designing great places. Our process of exploration allows the best solutions to emerge, and helps us develop strategies that lead communities forward.

### CREATE

Whether we are analyzing route alternatives for a greenway, master planning a regional park, or leading a community through the strategic planning process, our objective is always to create great, resilient places for people to live, work and play.



### Hoisington Koegler Group Inc.

123 North Third Street Suite 100  
 Minneapolis, Minnesota 55401  
 p: 612.338.0800  
 f: 612.338.6838  
 e: info@hkgi.com  
 w: www.hkgi.com  
 Est. 1982

#### Principals:

Mark Koegler, ASLA, CEO  
 Paul Paige, PLA, President  
 Brad Scheib, AICP, V.P.  
 Bryan Harjes, PLA, LEED AP, V.P.

#### Associate:

Jeff McMenimen, PLA

#### Staff:

- » 7 Licensed Landscape Architects
- » 3 Certified Planners
- » 1 Graduate Planner
- » 1 Graduate Landscape Architect
- » 1 Planner in Training
- » 1 Communications Staff

#### Services:

- » Comprehensive Planning
- » Strategic Planning
- » Regional and Area Planning
- » Public Participation
- » Landscape Architecture
- » Greenway Planning
- » Schematic & Site Design
- » Urban Design
- » Park Planning and Design
- » Corridor Studies

## LOAM, Inc.

### Loam, Incorporated

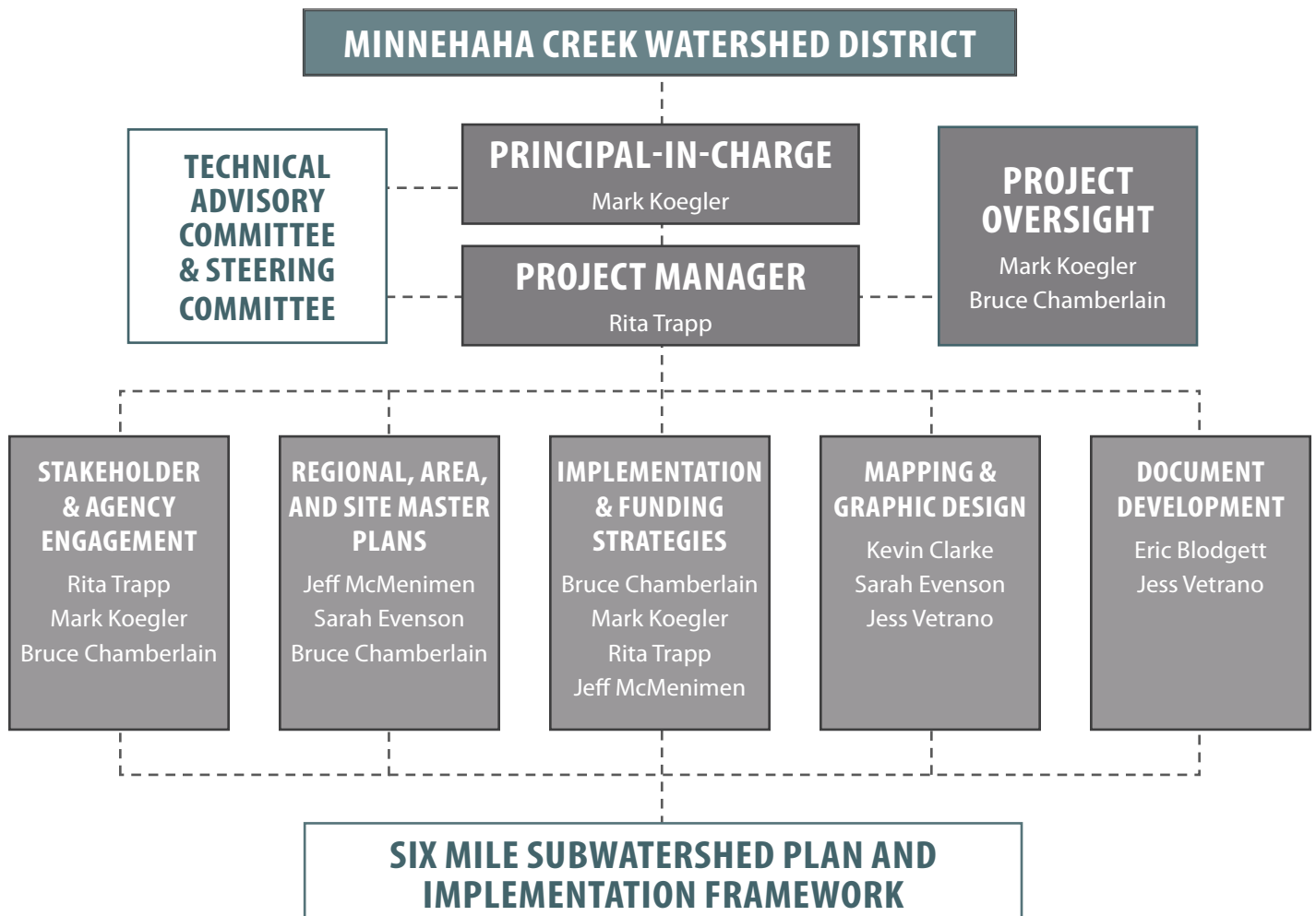
p: 612.743.6424  
 e: Bruce@Loam-Inc.com

#### Principal:

Bruce Chamberlain, ASLA

## Project Team Structure

The project team is organized to include a Principal in Charge and assigns two experienced leaders to the task of project oversight with a separate project manager responsible for the day-to-day coordination of project tasks. Organizing the project team in this manner allows the senior members of the team to focus their time more closely on the most complex tasks: stakeholder and agency engagement; development of the regional, area, and site master plans; and development of implementation and funding strategies. These three core tasks of the project will benefit from their experience and knowledge, yet still provides a way for them to provide guidance, advice, and quality control assistance to the project manager.



## PROJECT TEAM

The HKGi/Loam team of planners and landscape architects assembled for the Six Mile Subwatershed planning project are an accomplished group of professionals who bring over 100 years of collective experience to their project work. As illustrated in the qualifications statement for each team member below, and in the project experience listed on the resumes in the appendix, this team has proven its ability to work with community leaders, residents, and stakeholders to build consensus around an integrated vision, communicate that vision clearly to the public, and build plans, designs, and strategies to help communities implement and achieve their vision.

The HKGi/Loam team's success has been built on the foundation of strong, capable leadership; solid, seasoned project management; creativity in design and strategic planning; effective communication, which ensures that even the most complicated projects address important issues while still progressing towards completion and resolution; clear, concise presentation and visual communication, which ensures that stakeholders and community members not only stay informed but are also inspired to support plan visions, goals, and objectives; and strategic implementation thinking informed by the wisdom gained from experience and the knowledge gained from professional practice and expertise.

**Rita Trapp**, AICP, LEED AP, with HKGi will serve as Project Manager for the Six Mile Subwatershed planning project. In this role Rita will be responsible for coordinating the work of the consultant team and will coordinate communications with the MCWD, the Technical Advisory Committee, the Steering Committee, and the consultant team. In addition, Rita will make significant contributions to the stakeholder and agency engagement effort.

Rita brings over a dozen years of experience as a planner to this project. Although she provides a variety of planning services to HKGi clients, she has developed a strong portfolio of planning projects that feature active living and open space elements. In fact, she was the first planner in Minnesota to earn LEED AP certification. Rita has also contributed to over a dozen comprehensive planning projects and as a grant writer has secured over \$9 million for Minnesota municipalities, counties, and other organizations since 2010.

Rita's comprehensive planning experience will be particularly valuable for this project. She has provided guidance to Metro Council staff by serving on the Local Planning Handbook Focus Group as well as a comprehensive plan training program steering committee. The insight she has gained because of this service to the Metropolitan Council provides this project team and the MCWD with a valuable perspective and understanding that will aid the project.

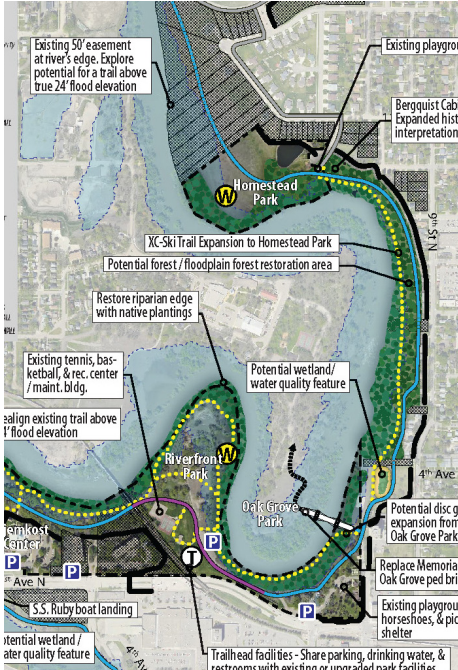
**Mark Koegler**, ASLA, CEO of HKGi, will serve as the Principal in Charge for this project. In this role Mark will oversee the project and ensure the quality of the service and deliverables provided by the consultant team. In addition, Mark will play a significant role in the stakeholder and agency engagement effort and will lend his expertise to the development of implementation and funding strategies.

In addition to bringing over 35 years of planning and project management experience, Mark also brings a strong reputation as a leader who can build consensus on even the most complicated, challenging planning projects in the Twin Cities. His leadership has been crucial to the success of some of the preliminary planning for both the Southwest Light Rail Transit and the Northstar Corridor. He has been entrusted with leadership roles on several multi-jurisdictional projects



2015 Engineering Excellence Grand Award  
American Council of Engineering Companies  
of Minnesota  
Designing a City for Zero Discharge  
Inver Grove Heights, MN

# PROJECT TEAM



2015 Planning in Context Award  
American Planning Association, Minnesota  
Red River Corridor Master Plan, Moorhead

for Hennepin County, and his contributions were essential to the success of the Downtown East/North Loop Master Plan project in which he was able to build support among a variety of constituencies whose interests sometimes conflicted with one another.

Over the course of his career in the Twin Cities, Mark has developed strong relationships throughout the planning, development, and municipal leadership professions. He is well respected among his peers, and his advice, guidance and participation in the Six Mile Subwatershed planning project will help generate positive results for the MCWD.

**Bruce Chamberlain**, PLA, ASLA, and founder of Loam, Inc. will work closely with Mark to provide project oversight. He will also provide leadership for the natural resource assessment and funding strategy development components of the project.

Bruce is a nationally recognized urban strategist with over 25 years of private, public and non-profit experience. He is the founding principal of Loam, Incorporated, a city-building practice focused on implementation of complex urban design and ecological system initiatives. In January 2015, he was named "Minneapolis Parks Fellow", a seat created by the Minneapolis Parks Foundation to offer a leading visionary and influential voice at the intersection of city-building and the Next Generation of Parks™.

Until 2011, Bruce was Vice President of Hoisington Koezler Group, playing a leadership role for nearly two decades in the firm's growth as a recognized community planning, urban design, and landscape architecture studio. After 22 years in private practice, Bruce became the chief of planning and design for the Minneapolis Park & Recreation Board with a charge to propel the City's storied park system into the 21st Century. In his nearly four years with the Park Board, he was responsible for over \$45 million in capital improvements, established a tenor of excellence, formed a charrette-based studio of urban planners and designers, and significantly bolstered community trust. At the Park Board, Bruce shepherded RiverFirst, a generational initiative to transform the city's remaining industrial riverfront; an initiative that has become a primary focus of his current role as Parks Fellow.

Mr. Chamberlain is past president of the Minnesota Chapter of the American Society of Landscape Architects. He is a 2010 University of Minnesota, HWS Cleveland Visiting Scholar and stays closely involved with academia as an adjunct professor and mentor. As a lifelong student, Bruce has traveled much of the world to understand the ingredients of great places.

**Jeff McMenimen**, PLA, and an Associate with HKGi will lead the regional, area, and site master plan component of the Six Mile Subwatershed project. During Jeff's nearly thirty year career he has displayed a design sensibility and a technical expertise that has garnered numerous landscape architecture awards for planning, design, and analysis. His professional career and his interest and passion for great places has taken him around the world, and he has had the opportunity to plan and design public spaces and landscapes in a variety of places and climates.

Jeff is an outstanding landscape architect who thrives in workshop environments in which his visual communication skills prove extremely valuable. His ability to listen to stakeholder input, understand important contexts, and quickly translate ideas into illustrations and concepts have shown themselves to be essential ingredients to successful planning projects. His ability to explore different concepts and ideas with



clients helps provide a more thorough understanding of important issues and allows ideas to be examined during the planning process. His creativity and technical expertise will be important contributors to the success of the Six Mile Subwatershed planning process. Jeff's natural resources-related project work includes the Great River Passage and the West Side Flats, both in Saint Paul, and both of which prominently feature sustainable design concepts aimed at improving and preserving water quality.

**Sarah Evenson**, PLA, of HKGi will participate in the regional, area, and site master planning component of the project, and her contributions to the visual communications pieces of the project will be particularly important. As illustrated in her resume in the appendix, Sarah has experience with water resources design as a result of her work with a water engineering firm, and she continued to build on that expertise with HKGi. Her visual communications skills have also been a strength that she has displayed on her project work. Her renderings on a variety of projects have been essential ingredients in developing a thorough understanding of concepts and design among project stakeholders.

**Kevin Clarke**, a graduate planner and landscape designer with HKGi will provide planning support, particularly in the area of mapping. He has provided a variety of planning services to communities during his career, and his work includes comprehensive planning, open space planning, and parks and recreation needs assessments.

**Eric Blodgett** of HKGi will coordinate report development for the project and will provide editorial services for project reports. He is a communications specialist and writer who has provided similar document development services for the Penn Avenue Corridor and the Rochester Comprehensive Plan projects. His participation will ensure that reports communicate clearly and concisely with a consistent voice.

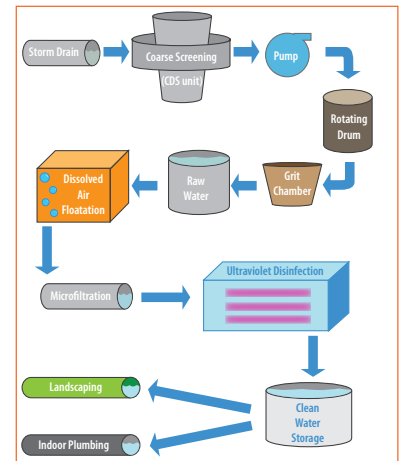
**Jess Vetrano**, a planner in training with HKGi, will provide document development, mapping, and graphic design support for the project. Jess has a background in urban studies and architecture, and her efficiency in document design and production has proven invaluable on several HKGi planning projects.

## Project Experience

The HKGi/Loam team has been providing communities and public organizations with planning and landscape architecture services for more than three decades. The projects described on the following pages all demonstrate this team's ability to conduct strategic planning across jurisdictions and facilitate inter-agency and inter-organization collaboration. Each of these projects are similar in scope to the Six Mile Subwatershed planning project and involved extensive stakeholder engagement efforts aimed as collecting input and building consensus.

In addition, as you will note, several of these projects are aimed at conserving or enhancing natural resources, preserving them or enriching them for the greater benefit of the public. As alluded to in the introduction to this qualifications statement, one of the hallmarks of the HKGi/Loam team's practice has been to promote ecological sustainability through planning and design. The planning approach taken by the HKGi/Loam team has proven its effectiveness in not only advancing ecological health, but also improving the value of land and securing multiple benefits for the public.

### Project Components

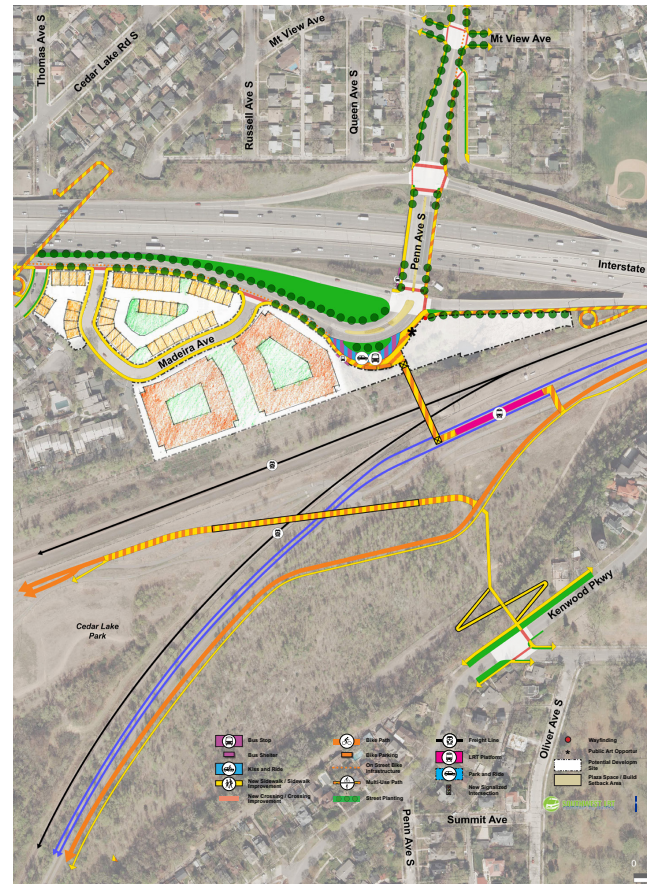
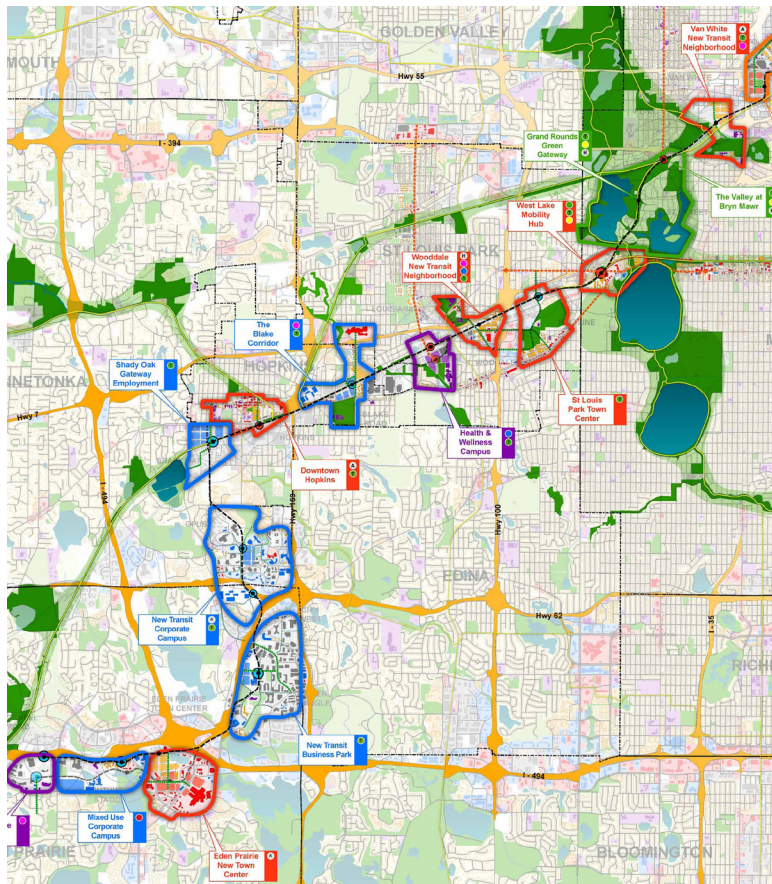


SMURRF process flow diagram  
(Source: <http://www.smgov.net/Departments/PublicWorks/Content/CivEng.aspx?Id=7796>)

2012 Honor Award  
American Society of Landscape Architects,  
Minnesota  
Storm Water Reuse Guide, Metropolitan  
Council

## Southwest LRT Transitional Station Area Action Plan

Hennepin County, Minnesota



HKGI led a multi-disciplinary consulting team in the preparation of Transitional Station Area Action Plans (TSAAP) for 17 stations in five municipalities along the 15-mile Southwest Light Rail (LRT) corridor from Minneapolis to Eden Prairie. The project's primary objective was to develop strategies to enhance mobility and to evaluate and identify the development potential and infrastructure needs at each station area for both opening day and in 2030. The project included collaboration among Hennepin County (the client); the Cities of Minneapolis, St. Louis Park, Hopkins, Minnetonka, and Eden Prairie; Metro Transit; Three Rivers Park District; Minnehaha Creek Watershed District; Minnesota Department of Transportation; the Preliminary Engineering consulting team; and many business and neighborhood organizations along the corridor.

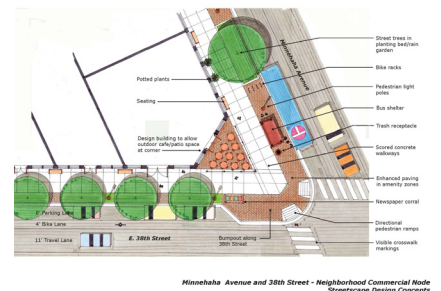
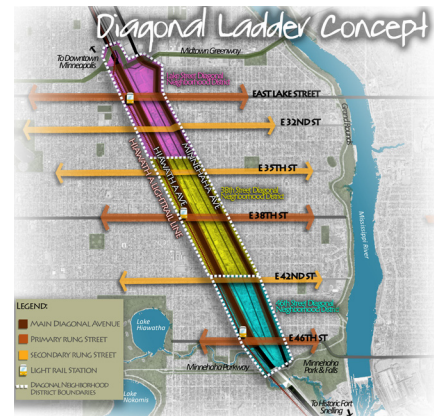
An extensive public process including public forums, open houses, design charrettes, presentations, surveys and focus group meetings was used to collect information, goals and objectives on the corridor from the community. This effort resulted in an extensive inventory of existing conditions (land use, infrastructure, natural resources, socio-economic, barriers and amenities) and a set of recommendations related to enhanced mobility and ridership at each station. The plan also includes a list of specific recommendations and associated capital improvement costs, ranked and prioritized, which municipalities will use to identify future expenditures necessary to provide successful transit service on opening day of the line and facilitate transit-oriented development at each station area over the next 15 years.

### Relevant Project Elements

- » Multi-jurisdictional coordination and collaboration
- » Multiple study areas involving multiple constituent groups
- » Implementation and phasing
- » Collaboration and coordination with client engineering team
- » Strategic planning
- » Land Use planning
- » Area planning
- » Community engagement

# Minnehaha-Hiawatha Community Works

Hennepin County Housing, Community Works and Transit



HKGi led a multi-disciplinary consulting team through a two-year process to develop a Strategic Investment Framework for the Minnehaha-Hiawatha corridor in Minneapolis. As the foundation for Hennepin County’s Minnehaha-Hiawatha Community Works initiative, the Framework for this three-mile urban LRT corridor focuses on improving neighborhood livability and prioritizing public and private investments in infrastructure and community development. The project required extensive collaboration and coordination across jurisdictions. Participants included Hennepin County, City of Minneapolis, Metro Transit, Minnesota Department of Transportation and neighborhood organizations.

The public engagement process benefitted from a full array of public information gathering techniques. Issues identified by stakeholders were categorized into five key topic areas: Mobility, Land Use & Physical Resources, Environment & Natural Resources, Economic Development, and Social, Cultural & Heritage. These topic areas provided a thematic structure for the 47 improvement and development projects identified in the framework report. The Minnehaha-Hiawatha Community Works Strategic Investment Framework report establishes the development vision for the area, which consists of creating a “diagonal ladder” of three connected livable neighborhood districts along the Minnehaha-Hiawatha corridor. Since adoption of the Framework, the corridor has seen an increasing amount of new development and investment, and major improvements to the streetscape and mobility environment are underway.

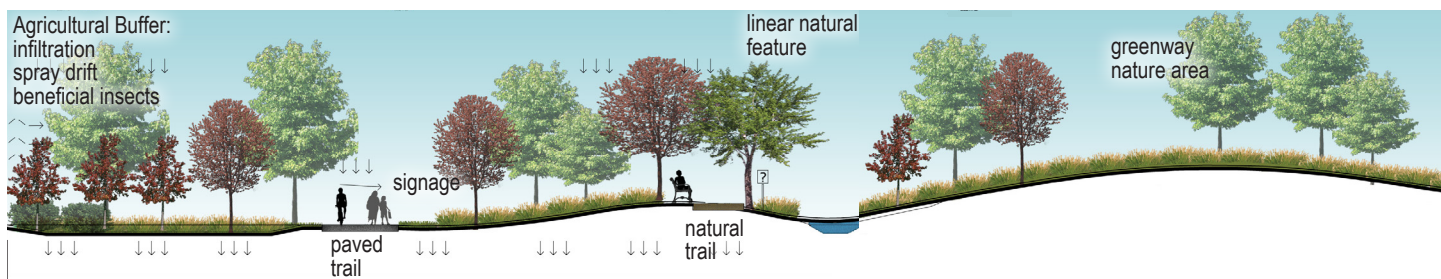
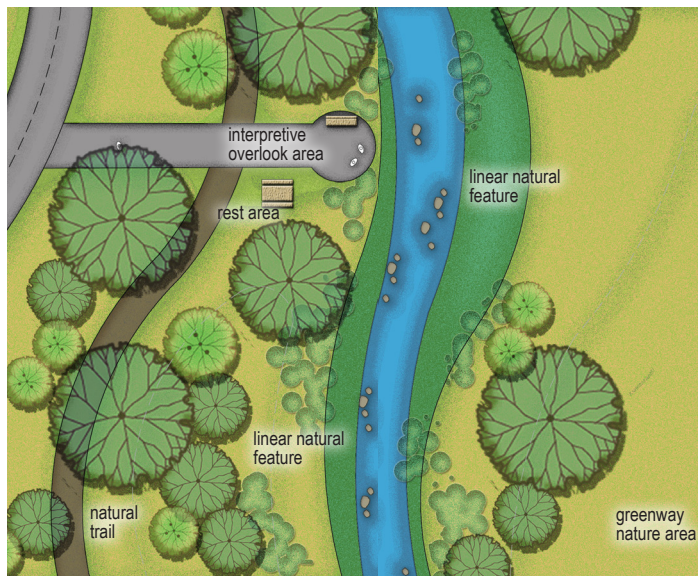
## Relevant Project Elements

- » Multi-jurisdictional coordination and collaboration
- » Implementation and phasing
- » Area planning
- » Strategic planning
- » Land Use planning
- » Infrastructure planning
- » Community engagement

# PROJECT EXPERIENCE

## Dakota County Greenway Guidebook

Dakota County, Minnesota



Dakota County is the third largest county in the Twin Cities Metro Area and the fastest growing county in the state. Planning for the protection, connection, and management of green infrastructure is essential for protecting natural systems and the quality of life in Dakota County. HKGi worked with Dakota County to create the Greenway Collaborative Guidebook, which establishes a ground-breaking approach to building a county-wide greenway network.

In Dakota County's network, greenways are treated as infrastructure that serves multiple public purposes, including serving transportation and recreation needs, providing habitat, conserving open space, and preserving water quality. This unique way of understanding a greenway as serving more than just a recreational function impacts the planning process and has required a high level of collaboration between HKGi, Dakota County, municipalities, other governmental agencies, and individual landowners in order to identify high quality corridors for inclusion in the network.

Since the guidebook was adopted in 2010, the framework has proven to be very effective. In that time HKGi and Dakota County have collaborated with cities and other agencies to produce master plans for several greenway corridors and has cooperated across agencies to secure land and funding for the county-wide greenway network. Several individual greenway master plans have been recognized for excellence by earning planning and landscape architecture awards, and implementation is well underway.



Minnesota Chapter, Partnership in Planning Award 2012

### Relevant Project Elements

- » Multi-jurisdictional coordination and collaboration
- » Implementation and phasing
- » Natural resources planning
- » Regional planning
- » Infrastructure planning
- » Federal and state funding sources
- » Community engagement

# Mississippi River Greenway Strategic Plan, Hastings River Flats

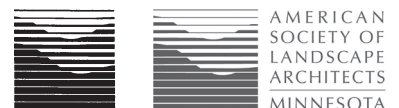
Dakota County, Minnesota



HKGI developed a series of sketches to illustrate the effects of a greenway on the landscape. The top sketch depicts agricultural land before incorporation of the greenway. The bottom sketch depicts the same land with a greenway incorporated into the landscape.

The mostly rural landscape south of the Mississippi River between Rosemount and Ravenna, Minnesota is experiencing tremendous pressure for change. With the Minneapolis/St. Paul metro area continuing to grow, this beautiful area is seen by many as one of the “next frontiers” of metropolitan development. At the same time, many people believe that their local and regional quality of life is rooted in the tremendous natural and rural amenities that make this place and others like it special. Finding common ground between these two potentially opposing forces is the basis for the greenway effort.

Hoisington Koegler Group, in partnership with Friends of the Mississippi River, conducted a greenway strategic planning process covering an area of approximately 60,000 acres in the communities of Hastings and Rosemount, as well as Marshan, Nininger and Ravenna Townships. Greenway preservation is a way to capture and hold on to the essence of a landscape by protecting the most critical natural and scenic lands. Agriculture, industry and neighborhoods can continue to grow and thrive, but the preserved fabric of natural landscapes also promotes a healthier ecosystem, a richer culture and a greater quality of life for the community. In addition to leading the planning effort, HKGI guided the plan through the various approvals processes required by each community, and continued to provide consulting services as the plan made its way through the implementation stage.



ASLA

2002 National Award Winner  
2003 Minnesota Award Winner

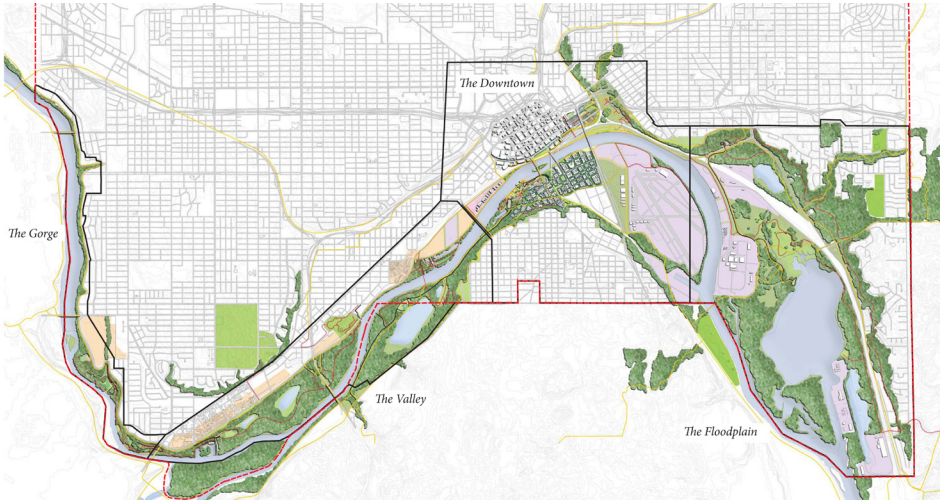
## Relevant Project Elements

- » Multi-jurisdictional coordination and collaboration
- » Implementation and phasing
- » Natural resources planning
- » Regional Planning
- » Infrastructure planning
- » Federal and state funding sources
- » Community engagement

# PROJECT EXPERIENCE

## Great River Passage Master Plan

Saint Paul, Minnesota



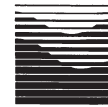
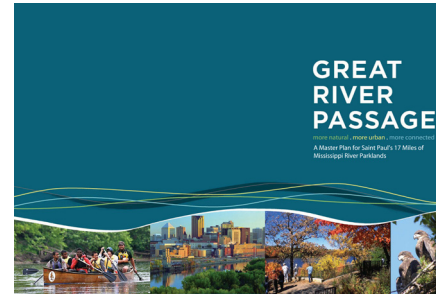
Graphics courtesy of Wenk Associates



Hoisington Koegler Group Inc., working with a multi-disciplinary team led by Wenk Associates from Denver, CO, prepared the Great River Passage Master Plan for the City of Saint Paul Parks and Recreation Department. The master plan builds on previous planning initiatives related to the Mississippi River in Saint Paul, promoting the concept of a more urban, more natural, and more connected river corridor.

The plan provides a vision for the 17 miles of the Mississippi River through Saint Paul, including strategies and concepts to enhance connections to the river, improve natural areas, protect significant resources within the river valley, and provide recreational, educational and entertainment amenities. The Master Plan's recommendations will help facilitate a better understanding of and engagement with the very resource that has been the lifeblood of Saint Paul and this landscape over thousands of years.

HKGi's role on the project team included park planning and programming, access and connectivity planning, urban/economic redevelopment planning, and community engagement.



ASLA

Minnesota Chapter, People's Choice Award 2014 and Merit Award, Analysis and Planning 2014

Colorado Chapter, Merit Award 2013



Minnesota Chapter, Innovation in Planning Award 2014

### Relevant Project Elements

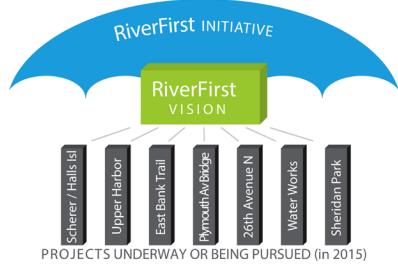
- » Multi-jurisdictional coordination and collaboration
- » Implementation and phasing
- » Natural resources planning
- » Regional Planning
- » Infrastructure planning
- » Federal and state funding sources
- » Community engagement

# RiverFirst

Minneapolis, Minnesota

Arguably, more than any city in the nation, Minneapolis draws identity from its park system; the signature being the inter-connected system of open space, trails, and parkways called the Grand Rounds. Since its inception in 2011, Bruce Chamberlain has acted as curator of the \$200 million RiverFirst initiative – a bold, 25-year vision to extend the Grand Rounds along both sides of the upper Mississippi River corridor. RiverFirst expands the notion of park by coupling recreational investments with systemic strategies for green infrastructure – an approach that derives multiple layers of public value from each investment. The RiverFirst initiative acts as an umbrella to multiple park development projects that will be implemented over time and employs public/private partnership, innovative long-term funding streams, adaptable design, and linkages with private sector redevelopment.

RiverFirst Strategic Approach



# PROJECT EXPERIENCE

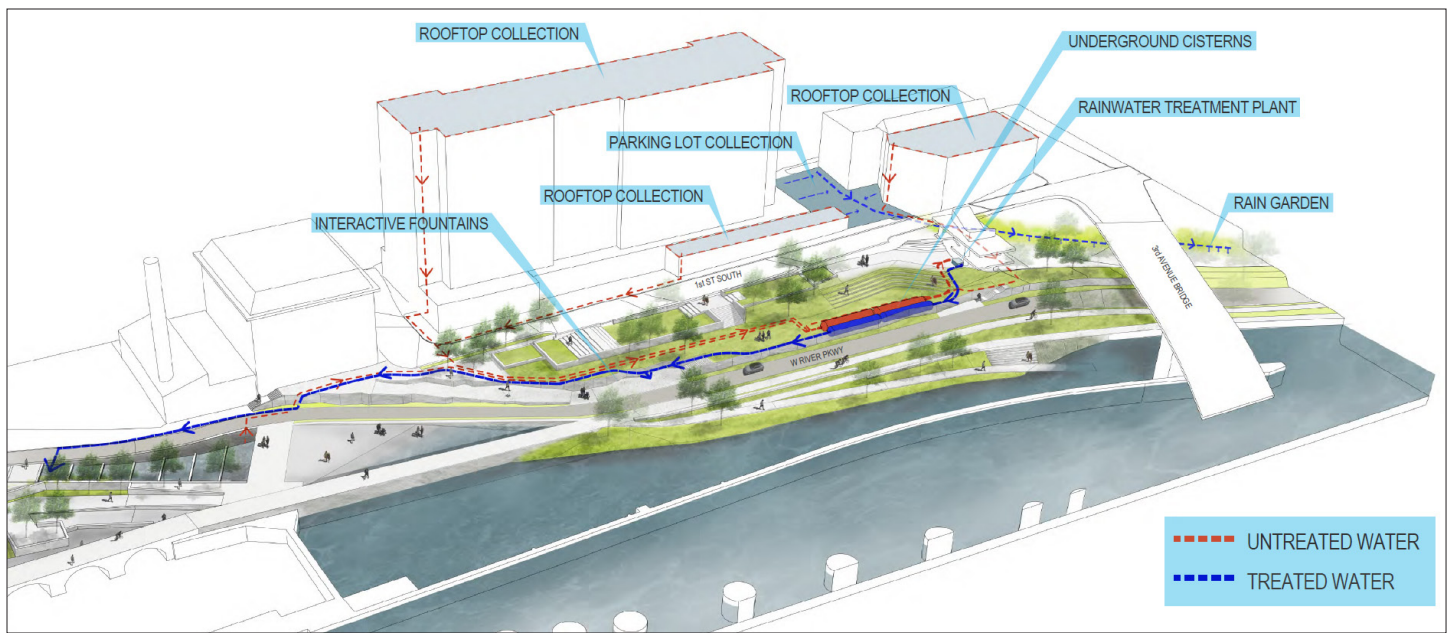
## Water Works

Minneapolis, Minnesota

As the inaugural implementation effort of the RiverFirst initiative, Water Works, under the curation of Bruce Chamberlain, is a \$25 million riverfront park project located at the confluence of St. Anthony Falls and the Stone Arch Bridge that will be fully constructed by 2023. One way Water Works is driving innovation is by capturing and treating nearly 100% of the rain that falls on the park and adjacent private properties. The captured rainfall will be held in underground cisterns and reused to flush toilets, irrigate, and operate public water features. The project will demonstrate how public open space can play a substantial role in the urban stormwater equation by reducing potable water use, minimizing stormwater infrastructure, and establishing a new norm for public/private stormwater partnerships.

### Relevant Project Elements

- » District rainwater reuse approach
- » Integration of highly complex design issues
- » Federal and state funding sources
- » Complex community engagement process





The following representatives are offered as references who can speak about their experience working with the members of the HKGi/Loam team.

## **HOISINGTON KOEGLER GROUP INC.**

**Ben Landhauser**, Community Development Director

City of Victoria  
blandhauser@ci.victoria.mn.us  
952-443-4218

**Mike Nigbur**, Park and Forestry Division Head

City of Rochester Parks and Recreation  
mnigbur@rochestermn.gov  
507-328-2541

## **HOISINGTON KOEGLER GROUP INC. AND LOAM INC.**

**Sarah Smith**, Community Development Director

City of Mound  
sarahsmith@cityofmound.com  
952-472-3190

**Jennifer Ringold**, Manager of Public Engagement and Citywide Planning

Minneapolis Park and Recreation Board  
jringold@minneapolisparcs.org  
612-661-4864

**Kurt Chatfield**, Planning Supervisor

Dakota County Office of Planning  
kurt.chatfield@co.dakota.n.us  
952-891-7022



RIVER TO RIVER GREENWAY  
MASTER PLANNING AND DESIGN  
DAKOTA COUNTY, MINNESOTA

## APPENDIX - RESUMES



## Rita Trapp, AICP, LEED AP

Planner | 612.252.7135 | rita@hkgi.com

Rita blends strong technical planning with exceptional communication and management skills. She is an effective communicator, comfortable organizing input processes and facilitating both large and small group activities. With her strong writing skills she has assisted more than a dozen local government agencies secure over \$9 million in grant funding.

Besides being a certified planner, Rita is a LEED-certified professional who incorporates sustainability issues into her planning work. She has led several active living initiatives including grant writing and administration as well as park and trail plan amendments.

In addition to serving on project teams, Rita has also provided general planning services to several communities, including providing day-to-day planning services for the City of Mound for the past ten years. This planning experience, combined with her work drafting development and zoning codes and service on her local planning commission, means Rita brings a thorough understanding of the ways in which policy and plans impact community development.

### Years of Experience: 12

#### Education

- » B.S., Land Use Geography and Economics, University of Wisconsin-Eau Claire

#### Registration

- » American Institute of Certified Planners - Cert. #021555

#### Memberships and Affiliations

- » American Institute of Certified Planners (AICP)
- » Accredited Professional, Leadership in Energy and Environmental Design (LEED)
- » Professional Development Officer (PDO) for Minnesota Chapter, American Planning Association
- » Former Secretary of Board of Directors, Minnesota Chapter, US Green Building Council
- » Minnesota Design Team, past Chair and co-leader of Walker and Maple Plain visits
- » Former Vice Chair, Planning Commission, Vadnais Heights, Minnesota

#### Awards

- » 2009 ASLA-MN Honor Award for Planning and Research - **Saint Paul Park and Recreation Vision Plan**

### RELEVANT PLANNING EXPERIENCE

- » Minnehaha-Hiawatha Community Works Strategic Development Framework | Hennepin County, MN
- » SW Transitway Alternative LRT Alignment Analysis | Hennepin County, MN
- » Metro Transit - NW Corridor BRT Station Area Plans | Hennepin County, MN
- » Western Shakopee/Jackson Township Land Use Master Plan | Shakopee, MN
- » Highway Corridors Transition Study | Shoreview, MN
- » Rice Creek North Regional Trail Master Plan Amendment | Ramsey County, MN
- » Parks and Recreation System Master Plan | Maplewood, MN
- » Above the Falls Regional Park Master Plan | Minneapolis Park Board
- » Parks and Recreation Master Plan | Rochester, MN
- » SHIP Grant Writing | Anoka County, MN
- » EECBG Grant Administration Assistance | Blaine, MN
- » SHIP Grant Writing | Dakota County, MN
- » General Planning Services | Mound, MN
- » Faribault Foods EAW and Development Review | Faribault, MN
- » Growth Area Plans and AUARs | Moorhead, MN
- » Comprehensive Plan | Eagan, MN
- » Comprehensive Plan | Hassan Township, MN
- » Comprehensive Plan | Luverne, MN
- » Comprehensive Plan | Monticello, MN
- » Comprehensive Plan | Moorhead, MN
- » Comprehensive Plan | Mound, MN
- » Comprehensive Plan | Perry, IA
- » Comprehensive Plan | Richfield, MN
- » Comprehensive Plan | St. Michael, MN
- » Comprehensive Plan | Wahpeton, ND



## Mark Koegler ASLA, PLA

CEO | 612.252.7120 | mkoegler@hkgi.com

Mark Koegler is a landscape architect and community planner with 30+ years of experience in both the private and public sectors. Mark is recognized across the planning field for his leadership skills and for his expertise as a public communicator and facilitator. Because of his ability to establish trust amongst groups with different interests, Mark has been able to achieve positive project outcomes through building public consensus and support. His communication and problem solving skills have been essential ingredients to the success of several of the region's most challenging development projects.

Mark has also used his leadership skills to help develop or promote professional organizations such as the Sensible Land Use Coalition (SLUC) where he served as a past president. Mark was instrumental in helping revitalize SLUC, which brings together real estate developers, government planning staff, and planning consultants. The organization is now one of the most influential land use organizations in the Twin Cities.

### Years of Experience: 35

#### Education

- » B.S. Landscape Architecture - Iowa State University
- » Business Administration - University of St. Thomas

#### Registration

- » Minnesota Landscape Architect License #15707

#### Memberships and Affiliations

- » American Society of Landscape Architects
- » American Planning Association
- » International Association for Public Participation (IAP2-USA)
- » Lambda Alpha International - Honorary Land Economics Society
- » Sensible Land Use Coalition, Past President and Board Member
- » Minnesota Design Team, Team Member and Team Leader
- » Minnesota State Designer Selection Board, Vice Chair

#### Awards

- » 2015 ACEC-MN Engineering Excellence Grand Award - **Designing a City for Zero Discharge, Inver Grove Heights, MN**
- » 2014 APA-IA Innovation in Economic Planning and Development Award - **Merle Hay Road Gateway Redevelopment Master Plan, Johnston, IA**

### DOWNTOWN AND REDEVELOPMENT PLANNING EXPERIENCE

- » Southwest LRT Alternative Analysis | Hennepin County, MN
- » Southwest LRT Transitional Station Area Action Plans | Hennepin County, MN
- » Minnehaha-Hiawatha Strategic Investment Plan | Hennepin County, MN
- » Downtown East/North Loop Master Plan | Minneapolis, MN
- » Downtown Minnesota Vikings Stadium Area Study | Minneapolis, MN
- » UMore Park Concept Master Plan and Pattern Book | Rosemount, MN
- » UMore Park Covenants and Design Guidelines | Rosemount, MN
- » Northwest BRT Scoping Study | Metro Transit
- » Northstar Corridor Development Agency Station Area Master Plans | Metro Transit
- » Comprehensive Plan (3) | Chanhassen, MN
- » Comprehensive Plan | Deephaven, MN
- » Comprehensive Plan (2) | Hopkins, MN
- » Comprehensive Plan | Mound, MN
- » Comprehensive Plan | New Prague, MN
- » Comprehensive Plan | Rochester, MN
- » Minnesota Orchestra Amphitheater Environmental Assessment Worksheet (EAW) | Brooklyn Park, MN
- » Penn Avenue Corridor Vision Framework | Hennepin County, MN
- » Shoreland Management Ordinance | Mound, MN
- » Bluff Creek Overlay Zoning Ordinance | Chanhassen, MN
- » Shoreland Management Ordinance | La Crescent, MN
- » Southwest MUSA Expansion Alternative Urban Areawide Review (AUAR) | Chanhassen, MN
- » Zoning Ordinance Amendments | Mound, MN
- » Downtown Master Plan | Excelsior, MN



**Years of Experience: 25+**

#### Education

- » Bachelor of Landscape Architecture, University of Minnesota, 1989
- » Study Abroad – Royal Melbourne Institute of Technology

#### Registration

- » Landscape Architect, Minnesota, License No. 22874

#### Memberships/Affiliations

- » Great Places Award Committee, Sensible Land Use Coalition
- » Lambda Alpha International - Honorary Land Economics Society
- » Past President; American Society of Landscape Architects, Minnesota Chapter
- » University of Minnesota - graduate student admissions committee, guest lecturer, mentor, studio critic

#### Recognition/Awards

- » Minneapolis Parks Fellow, Minneapolis Parks Foundation, 2015
- » HWS Cleveland Visiting Scholar, University of MN College of Design, 2010

## Bruce Chamberlain PLA, ASLA

Principal Planner | 612.743.6424 | bruce@LOAM-Inc.com

Bruce Chamberlain is a nationally recognized urban designer with over 25 years of private, public and non-profit experience. He is the founding principal of Loam, Incorporated, an urban design practice focused on strategic implementation of complex urban initiatives. In January 2015, he was named “Minneapolis Parks Fellow”, a seat created by the Minneapolis Parks Foundation to offer a leading visionary and influential voice at the intersection of city-building and the Next Generation of Parks™.

Until 2011, Bruce was Vice President of Hoisington Koegler Group, playing a leadership role for nearly two decades in building the firm from a two-person community planning shop to a leading urban design studio. After 22 years in private practice, Bruce became the chief of planning and design for the Minneapolis Park & Recreation Board with a charge to propel the City’s storied park system into the 21st Century. In his nearly four years with the Park Board, he was responsible for over \$45 million in capital improvements, established a tenor of excellence, formed a charrette-based studio of urban planners and designers, and significantly bolstered community trust. At the Park Board, Bruce shepherded RiverFirst, a generational initiative to transform the city’s remaining industrial riverfront that has become a primary focus of his current role as Parks Fellow.

### EXPERIENCE AT LOAM, INCORPORATED

LOAM is an urban design practice rooted in design vision and strategic implementation of complex and transformative urban initiatives. Current work:

- » RiverFirst, a \$200m initiative to transform Minneapolis’ industrial riverfront
- » WaterWorks, \$25m cultural landscape park project in Minneapolis
- » Downtown parklet program in Red Wing
- » Lakewalk park activation strategy in Duluth

### EXPERIENCE AT THE MINNEAPOLIS PARK & RECREATION BOARD

In his tenure with the Minneapolis Park Board, Bruce was responsible for a \$20–\$30 million annual capital budget. He brought renewed focus on long-range and systemwide planning as a basis for capital improvements. He transformed approaches and tools used with public/private partnerships and enterprise activities within parks. Bruce established community engagement processes that demystifies the design process and meaningfully involves the public. He successfully launched several public/private partnerships and negotiated challenging enterprise and vendor agreements. Leadership efforts include:

- » Webber Park Natural Treatment Swim Pond: design & construction
- » Minneapolis Sculpture Garden: lobbying and design
- » Parade Ice Garden: rehabilitation
- » Partnership agreements with the Loppet Foundation and Minneapolis Swims and vendor leases with Sea Salt, Tin Fish, and Sand Castle restaurants.

### SPEAKING ENGAGEMENTS

- » City Parks Alliance International Conference, 2015, Blue-Green Cities
- » Harvard Loeb Fellows Conf., urban issues panelist, 2013
- » Urban Currents, 2013, Public Spaces and Global Competitiveness



## Jeff McMenimen PLA

Associate | 612.252.7130 | jeff@hkgi.com

Jeff is an Associate at HKGI and a landscape architect/urban designer, credited with a range of complex and award-winning design and planning assignments over twenty five years of practice. Jeff has a particular interest in campus planning, streetscape and public space design, urban design, and transit-oriented development. His goal is to create high-quality, engaging and distinctive environments that foster community and a strong sense of place.

In addition to his project experience, Jeff is also active in professional organizations including the Urban Land Institute, where he has served on the Minnesota ULI Land Use and Transportation Committee. He has also taught urban design and landscape architecture studios at the University of Colorado at Denver, and at the University of Minnesota College of Design.

**Years of Experience:** 27

### Education:

- » Bachelor of Landscape Architecture - University of Minnesota
- » Regional Planning and Urban Design - University of Colorado at Denver

### Registration:

- » Landscape Architect, Minnesota License No. 43941

### Memberships/Affiliations:

- » Urban Land Institute, MN Land Use and Transportation Committee

### Awards:

- » 2014 ASLA-MN Merit Award; 2014 MN APA Innovation in Planning Award; 2013 ASLA-MN People's Choice Award; 2013 ASLA-CO Merit Award; and 2013 Honor Award from The Waterfront Center - **Great River Passage, Saint Paul, MN**
- » 2011 ULI Award for Excellence - **Riverfront Park, Denver, CO**
- » 2009 ASLA-MN Honor Award - **UMore Park Master Plan, Rosemount, MN**
- » 2009 ULI Award for Excellence, Kierland Commons, Phoenix
- » 2007 ASLA-MN Merit Award for Planning - **Bassett Creek Valley Master Plan, Minneapolis, MN**

### RELEVANT PROJECT EXPERIENCE

- » Southwest LRT Transitional Station Area Action Plan | Hennepin County, MN
- » Minnehaha/Hiawatha Corridor Strategic Investment Plan | Minneapolis, MN
- » Great River Passage Master Plan | Saint Paul, MN
- » Penn Avenue Corridor Vision & Implementation Plan | Hennepin County, MN
- » West Side Flats Master Plan and Development Guidelines | Saint Paul, MN
- » Upper Harbor Terminal Redevelopment Plan | Minneapolis, MN
- » UMore Park Concept Master Plan and Pattern Book | Rosemount, MN
- » UMore Park Covenants and Design Guidelines | Rosemount, MN
- » Bottineau LRT Station Area Plan | Hennepin County, MN
- » St. Louis River Corridor Vision | Duluth, MN
- » Southwest Area Growth and Development Plan | Chaska, MN
- » SWLRT Station Area Public Space Design | Eden Prairie, MN
- » Greater Southdale Area Land Use and Transportation Master Plan | Edina, MN
- » Cedar Avenue Bus Rapid Transit Station Area Planning | Apple Valley, MN
- » TCAAP Redevelopment Master Plan | Arden Hills, MN
- » Downtown Master Plan | Chaska, MN
- » Foley Station TOD Master Plan | Coon Rapids, MN
- » Fairmount Park Mini-Master Plan | Duluth, MN
- » Kayak Bay/Tallas Island Paddle Center Concept Plan | Duluth, MN
- » Town Center Design Guidelines and Redevelopment Plan | Eden Prairie, MN
- » Rivers Edge Park and Plaza Design | Elk River, MN
- » MMPA Energy Park Master Plan and Site Design | Faribault, MN
- » Springbrook Nature Center Master Plan and Site Design | Fridley, MN
- » Downtown Revitalization Plan | Grand Rapids, MN
- » Excelsior Boulevard Streetscape Design | Hopkins, MN
- » Minneapolis Sculpture Garden Reconstruction | Minneapolis, MN



## Sarah Evenson PLA

Landscape Architect | 612.252.7140 | sarah@hkgi.com

Sarah's background in urban ecology and green infrastructure combines with her strong graphic skill set to make her an essential contributor to landscape planning and site design projects. Her ability to think across scales and understand the complex and interrelated factors that influence a site allows her to express those processes graphically in a way that heightens a concept's understanding.

Skilled at artist's renderings, analysis mapping, and infographics, Sarah's ability to translate ideas, data, and processes into visually compelling graphics ensures that clients and stakeholders have as much insight into a project as the people designing it. Sarah is also well-versed in public engagement techniques, ensuring that the desires of the community are incorporated into the design process. At HKGi, Sarah's experience spans a variety of public work, from regional park master planning, urban design, and trail planning, to site design.

### Years of Experience: 5

#### Education

- » Master of Landscape Architecture  
- University of Minnesota
- » Bachelor of Environmental Design  
- University of Minnesota

#### Registration

- » Landscape Architect, Minnesota,  
License No. 53008

#### Memberships/Affiliations

- » American Society of Landscape  
Architects- Minnesota Chapter

#### Awards

- » 2015 MN APA Excellence in  
Community Engagement Award,  
**Great River Passage Interpretive  
Plan, Saint Paul**

### RELEVANT PROJECT EXPERIENCE

- » Great River Passage Interpretive Plan | Saint Paul, MN
- » West Side Flats Master Plan | Saint Paul, MN
- » SW LRT Station Area Design | Eden Prairie, MN
- » Nokomis-Hiawatha Regional Park Master Plan | Minneapolis, MN
- » Highway 96 Regional Trail Snail Lake Marsh Master Plan Amendment | Ramsey County, MN
- » Western Shakopee/Jackson Township Land Use Master Plan | Shakopee, MN
- » Lebanon Hills Trail Alternatives Evaluation | Dakota County, MN
- » Crow River and West Mississippi River Regional Trail Master Plans | Hennepin County, MN
- » Minnewashta Shores Rain Garden Design | Chanhassen, MN
- » \*City of Minneapolis Green Infrastructure Operations & Maintenance Manual | Minneapolis, MN
- » \*Powderhorn Neighborhood of Raingardens Water Quality Improvement Projects | Minneapolis, MN
- » \*100+ Raingarden and shoreline restoration designs | Ramsey County, MN
- » \*College of St. Benedict Sustainable Landscape Master Plan | St. Joseph, MN
- » \*Maumee Bay Berger Ditch Stormwater Wetland Treatment System | Jerusalem Township, OH
- » \*Macalester College Sustainable Landscape Master Plan | Saint Paul, MN
- » \*Mouse River Flood Prevention Plan | Minot, ND
- » Downtown and Public Space Streetscape Schematic Design | Chaska, MN
- » MMPA Power Plant Site Design | Shakopee, MN
- \* Projects completed prior to joining HKGi



## Kevin Clarke

Graduate Planner | 612.252.7143 | kevin@hkgi.com

Kevin is a community planner and landscape architect in training. At HKGi he has been especially involved with park and recreation planning, contributing to system master plans, individual park master plans, trail and bikeway plans, and athletic facilities plans. He has also participated in community comprehensive planning, neighborhood planning, land use analysis and planning, and site design projects. Kevin's work at HKGi has focused on GIS mapping, conditions analysis, plan writing, and public engagement, and he has provided support for concept planning, design, and visual communication.

In addition to his project work, Kevin has also been involved with volunteer community planning efforts including the Minnesota Design Team and the Urban Land Institute's UrbanPlan for High Schools and Universities. Before joining HKGi, Kevin preserved and restored historic landscapes while at The Jens Jensen Center and The Clearing in Door County, Wisconsin. He also brings construction experience from multiple urban infill projects in Portland, Oregon.

### Years of Experience: 5

#### Education:

- » Landscape Architecture - University of Minnesota
- » Urban and Regional Planning - University of Minnesota
- » B.A., Economics - Saint John's University

#### Memberships/ Affiliations:

- » Urban Land Institute - UrbanPlan for High Schools and Universities
- » Minnesota Design Team
- » McCarthy Center for Public Policy and Civic Engagement

#### Awards

- » 2015 MI APA Daniel Burnham Award for a Comprehensive Plan - Comprehensive Plan for the City of Ironwood

### RELEVANT PROJECT EXPERIENCE

- » Rice Creek North Regional Trail Master Plan | Ramsey County, MN
- » Munger Trail Spur Connector Plan | Hermantown and Proctor, MN
- » Mission Creek and Magney Snively Trail Planning | Duluth, MN
- » Rice Creek Trail Master Plan | Dakota County, MN
- » Potlatch Corporation Land Use Analysis | Multiple Locations in Minnesota
- » Potlatch Corporation Land Use Analysis and Concepts | Clark County, AR
- » Potlatch Corporation Land Use Analysis | Kennally Creek, ID
- » Northwest Area Roads Plan | Inver Grove Heights, MN
- » Concord Boulevard Neighborhood Redevelopment Plan | Inver Grove Heights, MN
- » Comprehensive Plan | Bondurant, IA
- » Small Area Plan Studies | Bondurant, IA
- » Comprehensive Plan | Byron, MN
- » Comprehensive Plan and Zoning Ordinance | Storm Lake, IA
- » Downtown and Public Space Schematic Streetscape Plan | Chaska, MN
- » Greenfield Central Park Master Plan | Greenfield, MN
- » Community Planning Services | Greenfield, MN
- » Comprehensive Plan | Ironwood, MI
- » Comprehensive Plan | Perry, IA
- » Cedar Avenue BRT TOD Study | Apple Valley, MN
- » County Road 61 Corridor Study | Chanhausen, MN
- » Broadway Avenue Streetscape - Missing Link | Alexandria, MN
- » Transportation Enhancement Grant Writing Services | Anoka County, MN
- » Safe Routes to School Grant Writing Services | Anoka County, MN
- » Timberwood Business Park | Baxter, MN
- » North Street Study | Bondurant, IA





# Eric Blodgett

Marketing Director | 612.252.7132 | eric@hkgi.com

Eric is a communications professional with over ten years of experience coordinating marketing communications campaigns and developing communications and outreach materials. As a writer and editor he is responsible for editing many of HKGi’s plan reports and publications to ensure that they are clear, concise, and reader-friendly. He is also responsible for managing HKGi’s communications resources, including strategic communications planning, copywriting, web site management, materials design and production, and coordinating proposal and other business development submissions.

In addition to his experience with HKGi, Eric has also led communications initiatives in the higher education and non-profit sectors. In those positions he oversaw newsletter and blog production, advertising campaign development, web site development, and social media and new media campaign implementation.

**Years of Experience: 13**

**Education:**

- » M.A., English, Rhetoric and Composition - Texas A&M University
- » B.A., English - University of Texas at Austin

**Memberships/Affiliations:**

- » International Association of Business Communicators

## MARKETING AND COMMUNICATIONS EXPERIENCE

- » Penn Avenue Corridor Vision and Implementation Plan | Hennepin County, MN
- » Comprehensive Plan 2040 | Rochester, MN
- » Parks and Recreation System Master Plan | Elk River, MN
- » Park System Plan | Maplewood, MN
- » Little Dixie Highway of the Great River Road National Scenic Byway Nomination | Clarksville, MO
- » Crowley’s Ridge National Scenic Byway Interpretation | Dunklin County, MO
- » \*Web Site Development and Management | Texas A&M University Memorial Student Center
- » \*Annual Digital and Print Advertising Campaign | Texas A&M University Memorial Student Center
- » \*Social Media Management | Texas A&M University Memorial Student Center
- » \*Relocation Awareness Campaign | Texas A&M University Memorial Student Center Renovation and Expansion
- » \*Grand Opening Celebration Advertising Campaign | Texas A&M University Memorial Student Center
- » \*Monthly Newsletter and Annual Report Design and Production | LNB Community Centers, Minneapolis, MN
- \* work completed while with another employer



## Jess Vetrano

Planner In-Training | [jessica@hkgi.com](mailto:jessica@hkgi.com)

With degrees in both Architecture and Urban Studies, Jess is interested in master planning, urban design, and streetscape design. At the University of Minnesota, she focused her senior project on the facility and infrastructure projects built for the Olympic Games, and the ways in which host cities have evolved around these projects in their post-game environments.

At HKGi, Jess contributes to the development of project proposals, meeting presentation and community engagement materials, final reports, and marketing materials. In addition to creating GIS maps, she has also used her visual communication and design skills to produce report and document templates, diagrams, street sections, and perspectives. Jess has also contributed her research and database management skills to the creation of a development database that contains precedent information for development FARs, use breakdowns, unit types, land use percentages, and other information. The database is an in-house resource that provides guidance for the preliminary form and function of planning efforts.

### Years of Experience: 1

#### Education

- » B.D.A., Architecture - University of Minnesota, Minneapolis, MN
- » B.S. Urban Studies - University of Minnesota, Minneapolis, MN
- » Study Abroad - ACCENT International, Rome, Italy

#### PROJECT EXPERIENCE

- » Athletic Facilities Study | Chanhassen, MN
- » Grant Writing | Dakota County, MN
- » Cross City Trail Master Plan | Duluth, MN
- » Parks and Recreation System Master Plan | Elk River, MN
- » Downtown Redevelopment Plan | Farmington, MN
- » Comprehensive Plan | Gaylord, MN
- » General Planning Services | Greenfield, MN
- » Crow River Regional Trail Master Plan | Hennepin County, MN
- » West Mississippi River Regional Trail Master Plan | Hennepin County, MN
- » Munger Trail Spur Connector | Hermantown and Procter, MN
- » Parks and Recreation System Master Plan | Hopkins, MN
- » Development and Land Use Databases | In-house Resources
- » Comprehensive Plan | Le Sueur, MN
- » Comprehensive Plan | Rochester, MN
- » Parks and Recreation System Master Plan | Maplewood, MN
- » Glen and Hoffman Park Master Plans | River Falls, WI
- » Parks and Recreation System Master Plan | Rochester, MN
- » Western Shakopee/Jackson Township Land Use Master Plan | Shakopee, MN
- » Downtown Redevelopment Plan | Victoria, MN
- » Unified Development Code | Winona, MN
- » Athletic Facilities Study | Woodbury, MN

**This Page Intentionally Left Blank**



*Creating **PLACES**  
that **ENRICH** people's lives*