

325 Blake Road Restoration and Redevelopment

January 24th Public Meeting

This meeting will begin at **6:30 PM.**



MINNEHAHA CREEK
WATERSHED DISTRICT
QUALITY OF WATER, QUALITY OF LIFE



City of Hopkins

ALATUS

Meet the Team



Minnehaha Creek Watershed District



Gabe Sherman



Michael Hayman



James Wisker

City of Hopkins



Kersten Elverum



Jan Youngquist

Alatus

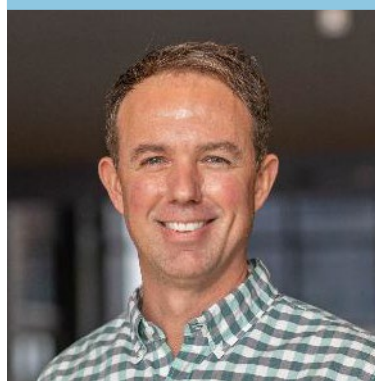


Bob Lux

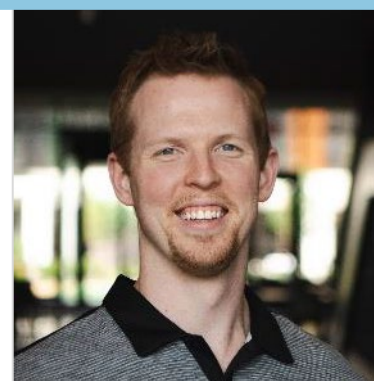


Chris Osmundson

HDR/Damon Farber Design Team



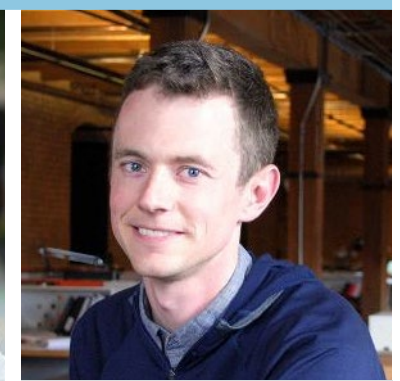
Andrew Judd



Kurt Bearinger



Jeff McMenimen



Andrew
Montgomery

Questions?



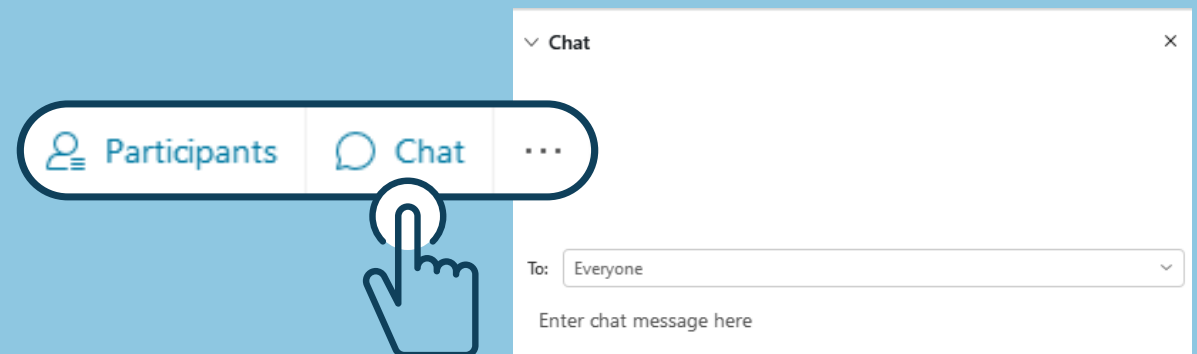
If you have technical difficulties,
please call **612.799.6816** or email
alicia.uzarek@hdrinc.com.



Click on the Raise Hand
function to speak out loud.



To view closed captions,
click on this button.



Meeting Purpose & Overview

- Project overview
- How engaged neighbors have shaped the design process
- Preview draft 60% plans
- Real-time survey activity
- Next Steps
- Q&A



MINNEHAHA CREEK
WATERSHED DISTRICT
QUALITY OF WATER, QUALITY OF LIFE



City of Hopkins

Timeline

SPRING 2021



Listening sessions focused on visions for the entire site

SUMMER 2021



~~ALATUS~~
Alatus selected as Development Partner



SUMMER 2021

Community open house focused on design ideas for the public space



SUMMER & FALL 2021

Project partners conducted more community engagement as design progressed

WINTER 2021/2022

Community open house focused on interpretive themes and site amenities

SPRING 2022

Finish site design and permitting

SUMMER/FALL 2022 - 2025

*Phase I Construction
Infrastructure, site restoration, public areas, and multi-family housing*

2025 - 2028

*Phase II Construction
Additional multi-family housing*



Spring 2021 Listening Sessions



What We Heard

Access to nature



Across groups, participants valued access to nature in an urban area and its potential to improve residents' quality of life.

Connections



Participants were interested in having on-site trails connect with other areas along the Minnehaha Creek Greenway and to the Blake Road LRT Station.

Aesthetically pleasing stormwater treatment features



Participants felt on-site stormwater treatment, a key function of the site, should be aesthetically pleasing in many weather and seasonal conditions.

Maintaining and enhancing the community diversity



A majority of participants identified the community's diversity as a strength to be maintained and enhanced.

Affordability and housing



There was interest among participants in housing and affordability related to the development.

Supporting pedestrian, bicycle, and public transit



Participants were interested in how pedestrian, bike and public transit transportation could be supported by the site's design.

Summer 2021 Survey



What We Heard

Access to nature



Water Activities:

4.0

Actively recreate ON water (canoe, kayak, tube, etc.)

4.0

Be contemplative NEAR water, alone or in small groups

Landscape Views:

4.0

Naturalized landscapes that look like state parks

Nature Views:

4.0

Falling water (example: waterfall)

4.4

Moving water (example: stream)

Plants & Vegetation:

4.5

Large canopy trees along streets, sidewalks, and trails

Connections



Modes & Mobility:

4.5

Walk, bike, or take transit to our destinations

Trail Features & Amenities:

4.5

Benches near sidewalks and trails

Materials & Types:

4.2

Walk on paved sidewalks and trails

4.1

Use Minnehaha Creek as a “water trail” for traveling by canoe or kayak

Aesthetically Pleasing Stormwater Treatment



4.2

See stormwater being managed through innovative design, such as rain gardens

Maintain & Enhance Community Diversity



Sizes & Types of Public Space:

4.0

Gatherings of small families

4.0

Couples of individuals

Features & Amenities:

4.3

Public restroom facilities

4.0

Outdoor recreation and entertainment opportunities throughout the year for people of various abilities and ages

Neighborhood Diversity:

4.4

All trails and open space amenities to be ADA accessible

4.1

Elements which engage children to play or learn

Fall 2021 Survey



What We Heard



Educational Themes

- Local ecology highlighting flora and fauna
- Minnehaha Creek history
- Stormwater management strategies
- Water quality statistics
- Importance of Minnehaha Creek to Native American culture
- Neighborhood history

Overall Site Plan

DEVELOPER CONCEPT

TRAILHEAD AND OVERLOOK

GATEWAY TO GREENWAY

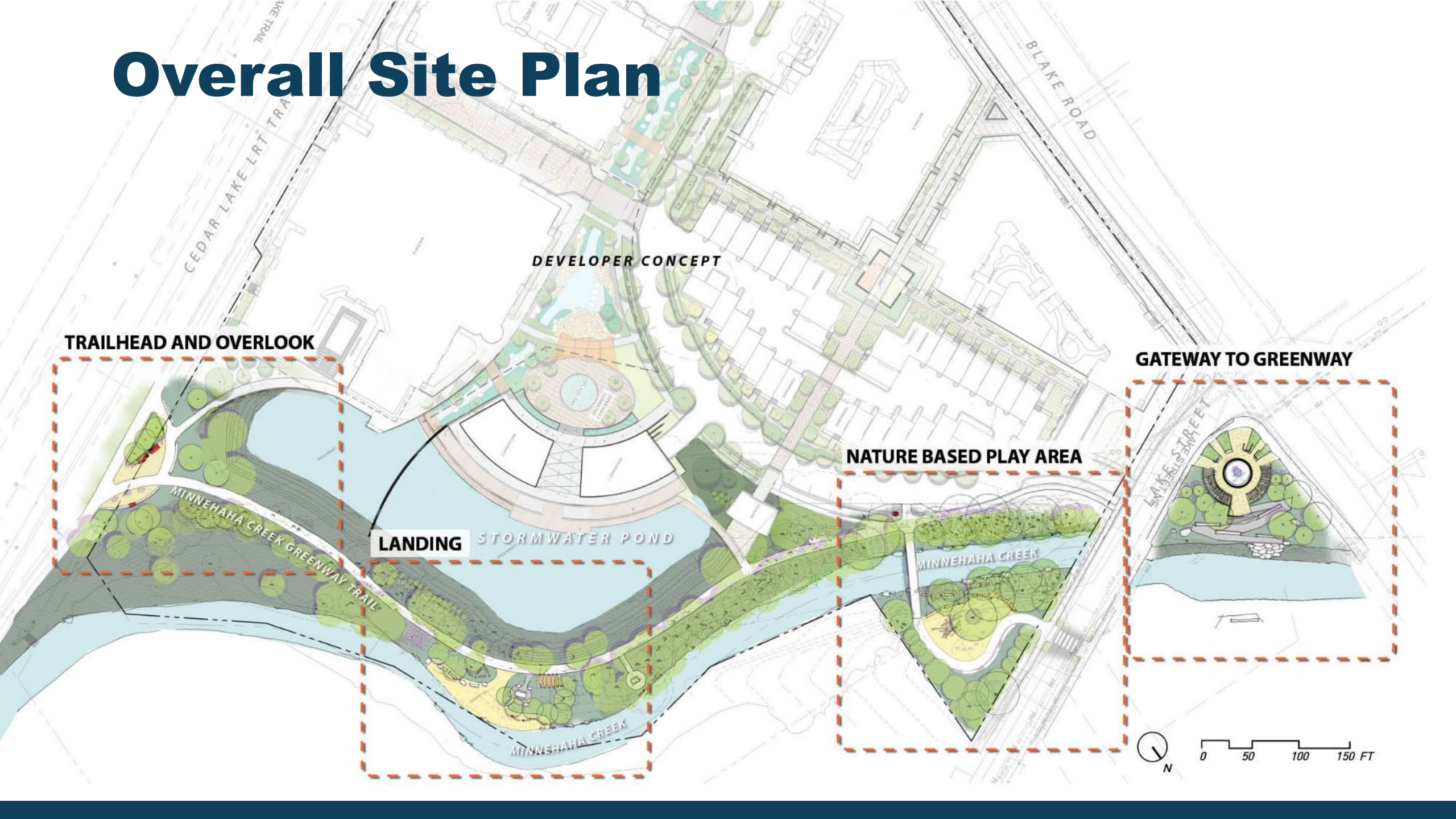
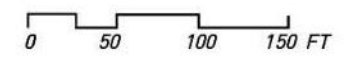
NATURE BASED PLAY AREA

LANDING STORMWATER POND

MINNEHAHA CREEK GREENWAY TRAIL

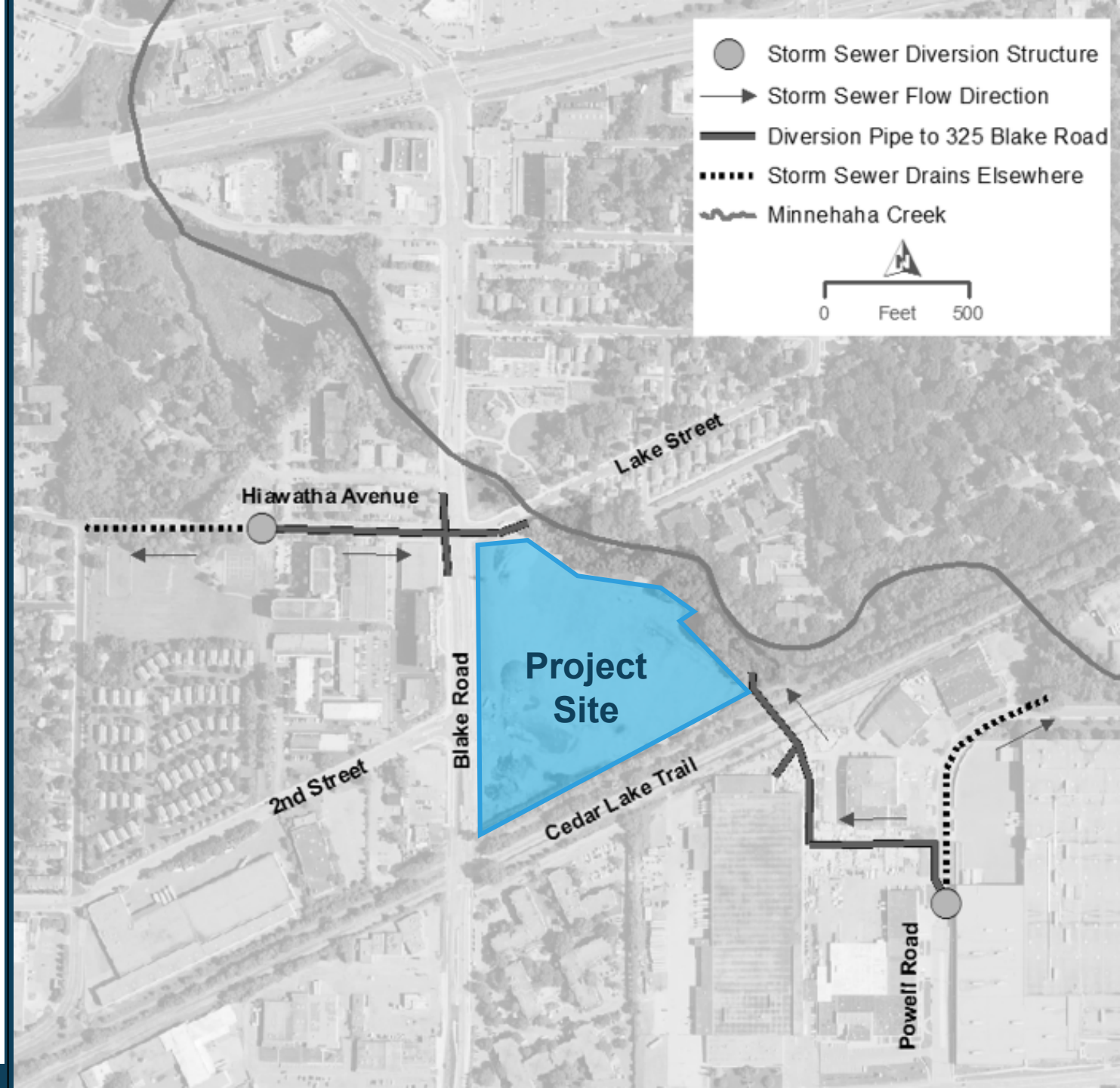
MINNEHAHA CREEK

MINNEHAHA CREEK

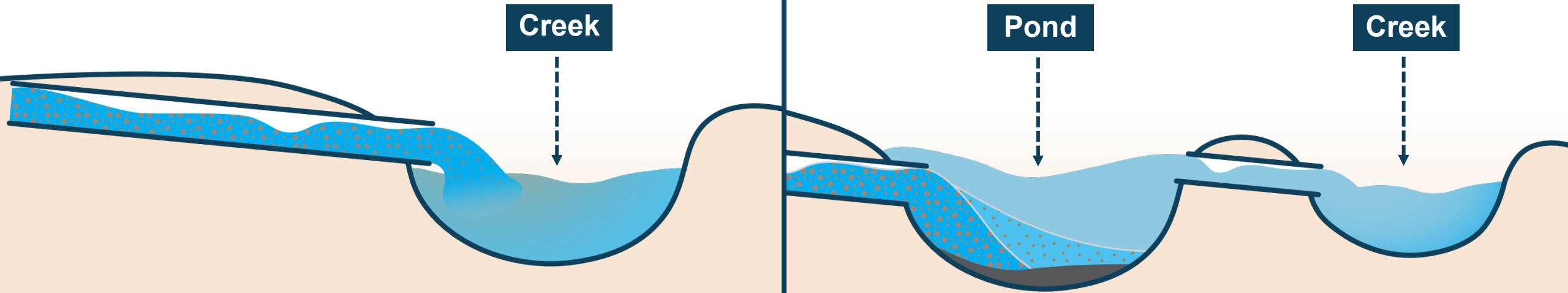


Stormwater Treatment

- Lake Street Storm Sewer
 - 30 acres of urban land use
 - Flows directly to the creek
- Powell Road Storm Sewer
 - 226 acres of industrial land use
 - Flows directly to the creek



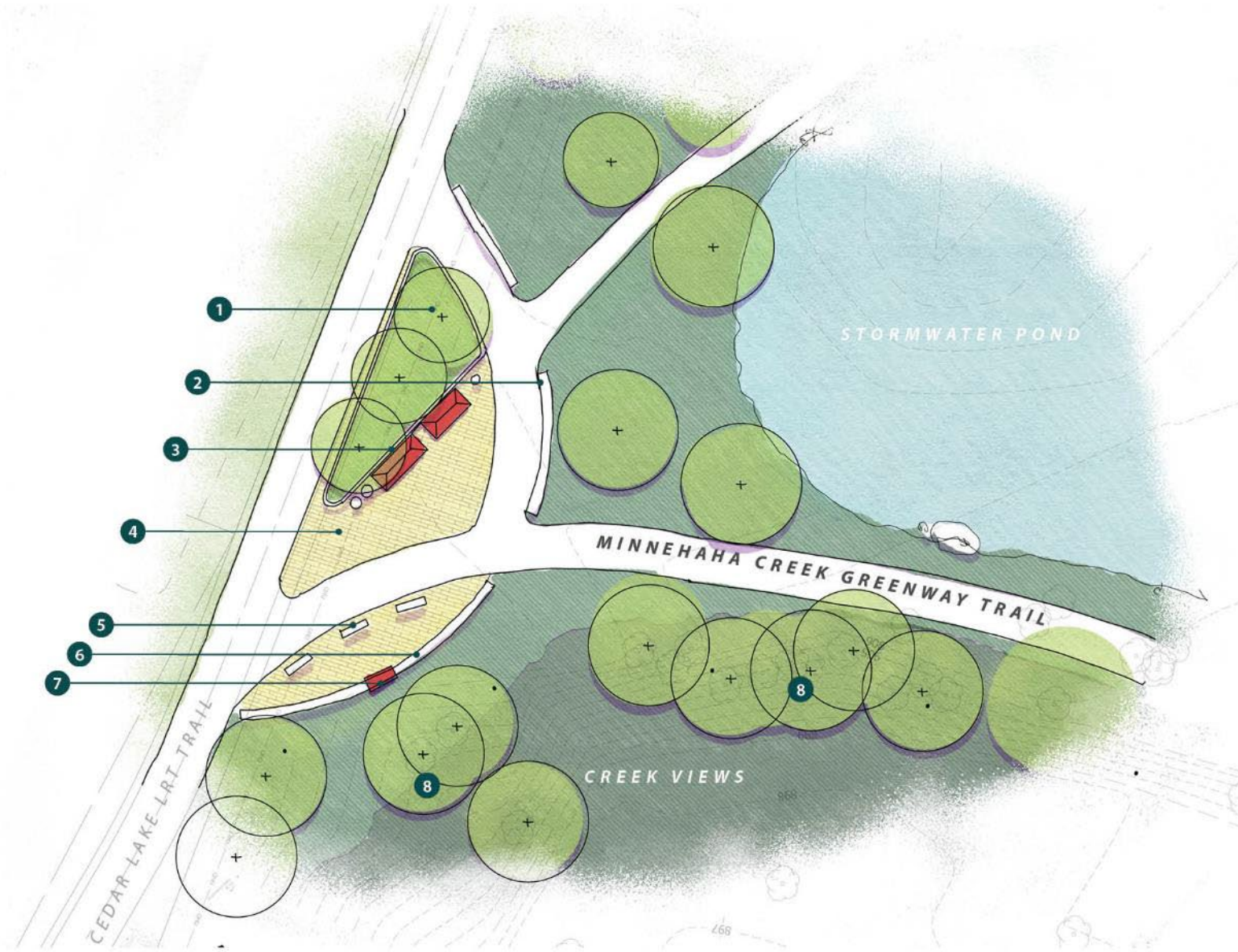
Stormwater Treatment



Currently, untreated stormwater flows into the creek.

The new pond will break that creek connection, allow pollutants to settle, and discharge cleaner stormwater to the creek.

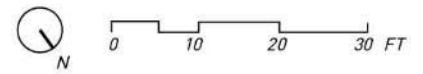
Trailhead and Overlook



key

- 1 RAISED PLANTING
- 2 BLOCK SEATING
- 3 TRAILHEAD KIOSK
- 4 PERMEABLE PAVERS
- 5 BLOCK BENCH
- 6 SEATWALL
- 7 CREEK INTERPRETATION (PUBLIC ART)
- 8 PRESERVE EXISTING TREES

key plan





Trailhead and Overlook



Trailhead and Overlook

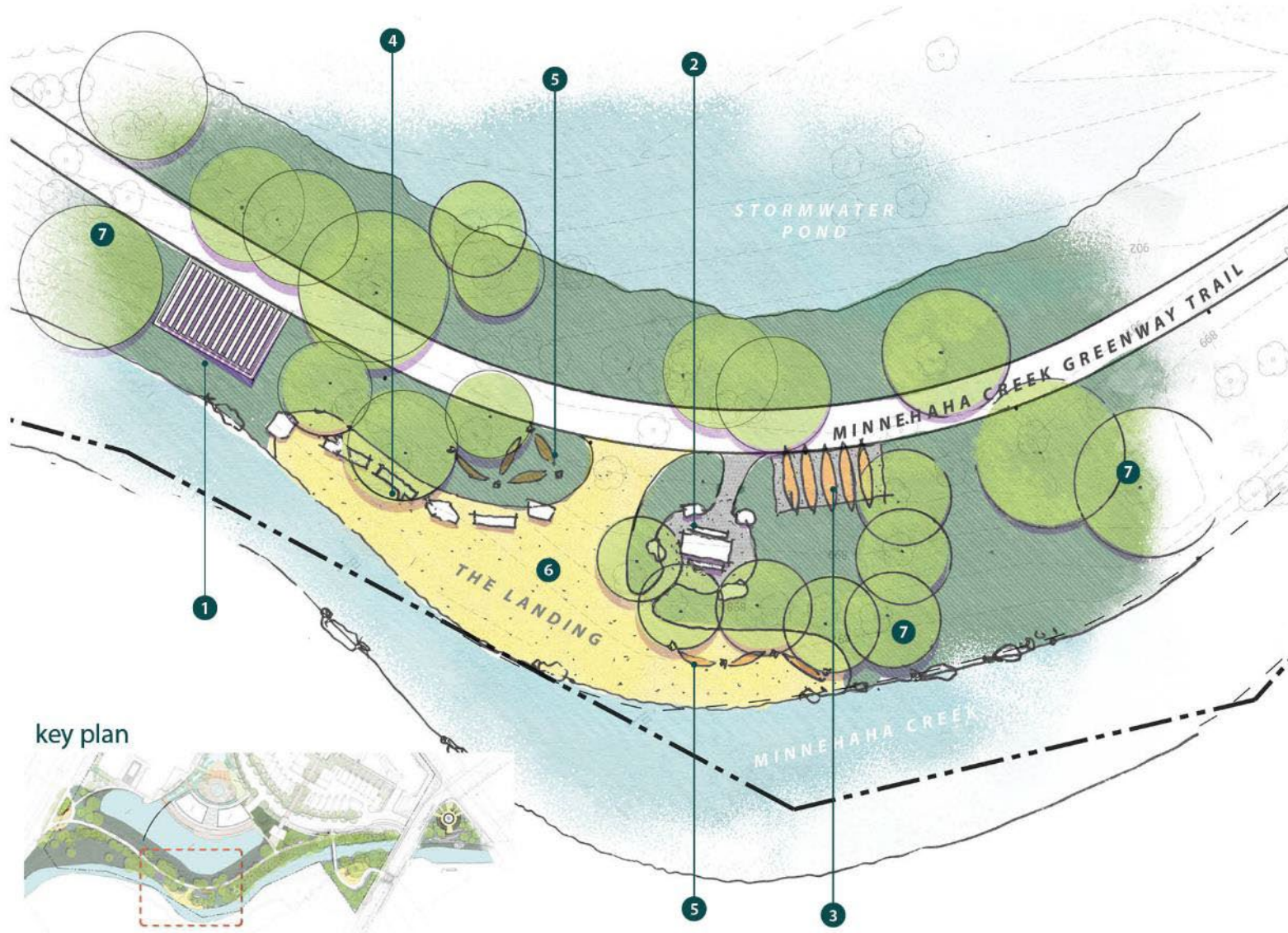


Trailhead and Overlook



Trailhead and Overlook

The Landing



key

- 1** OVERLOOK WITH PERGOLA
- 2** PICNIC AREA
- 3** SHORT TERM CANOE STORAGE
- 4** INFORMAL SEATING
- 5** HAMMOCK POLES
- 6** CREEK ACCESS
- 7** PRESERVE EXISTING TREES

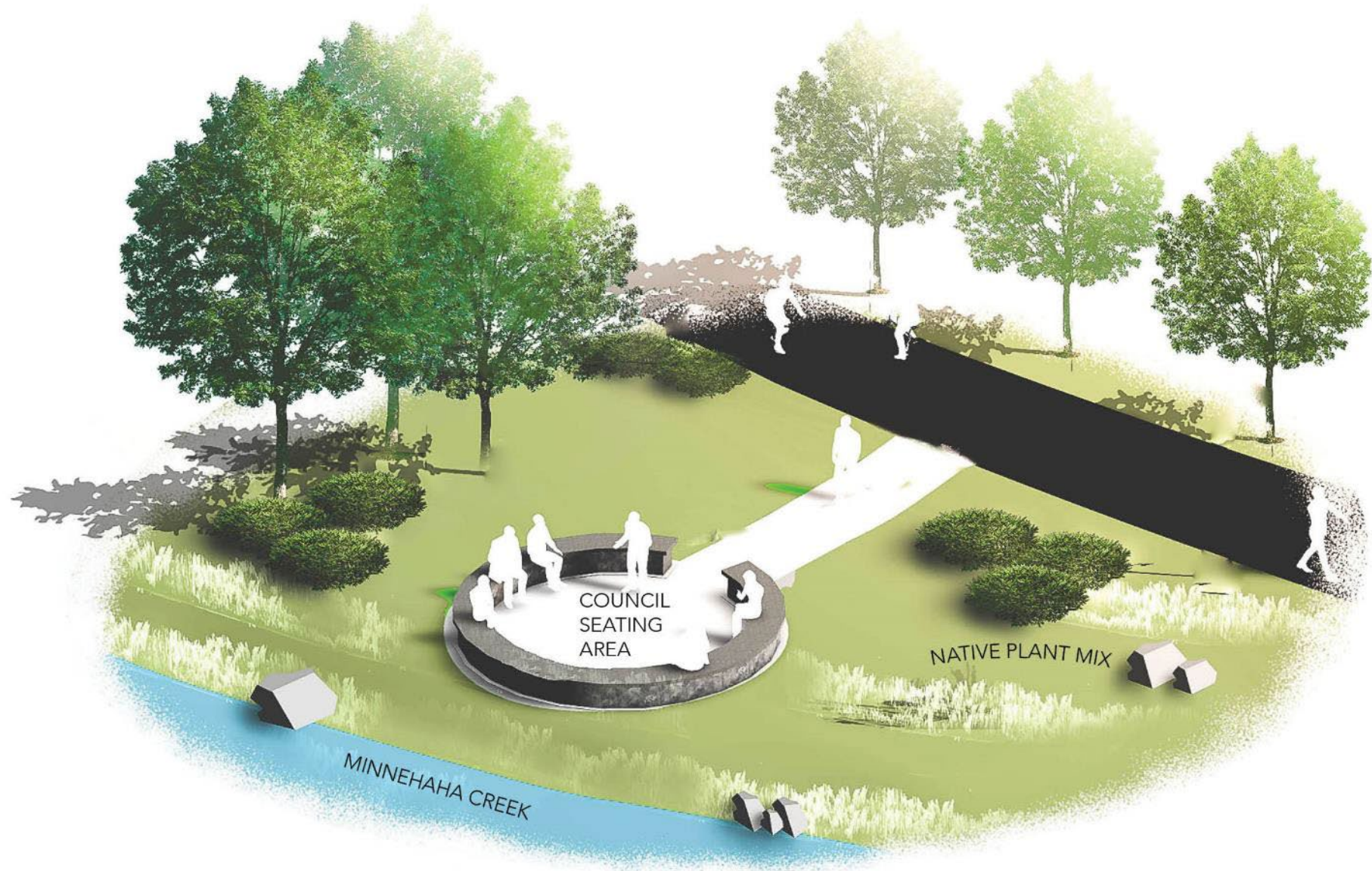


The Landing

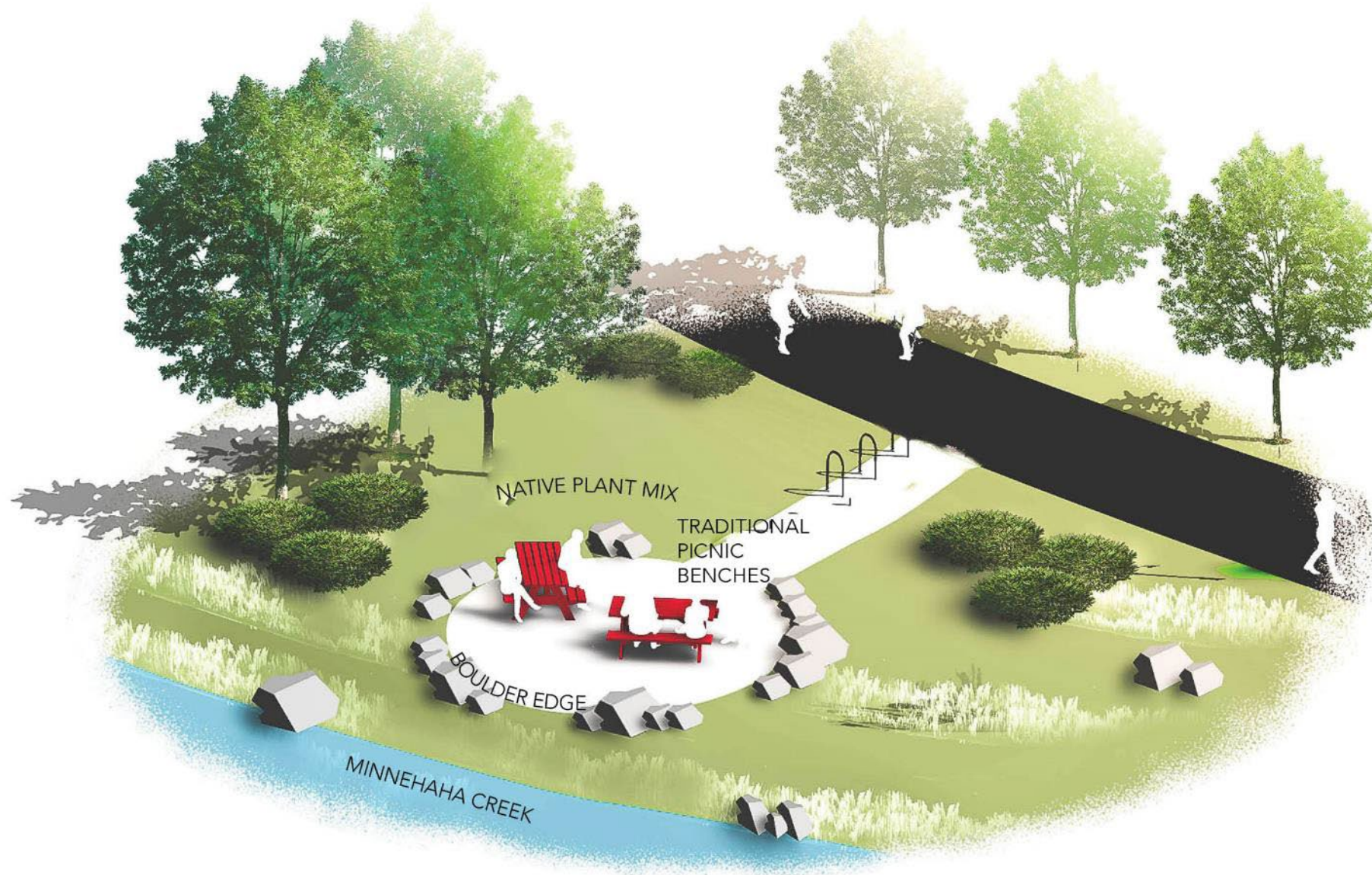


The Landing

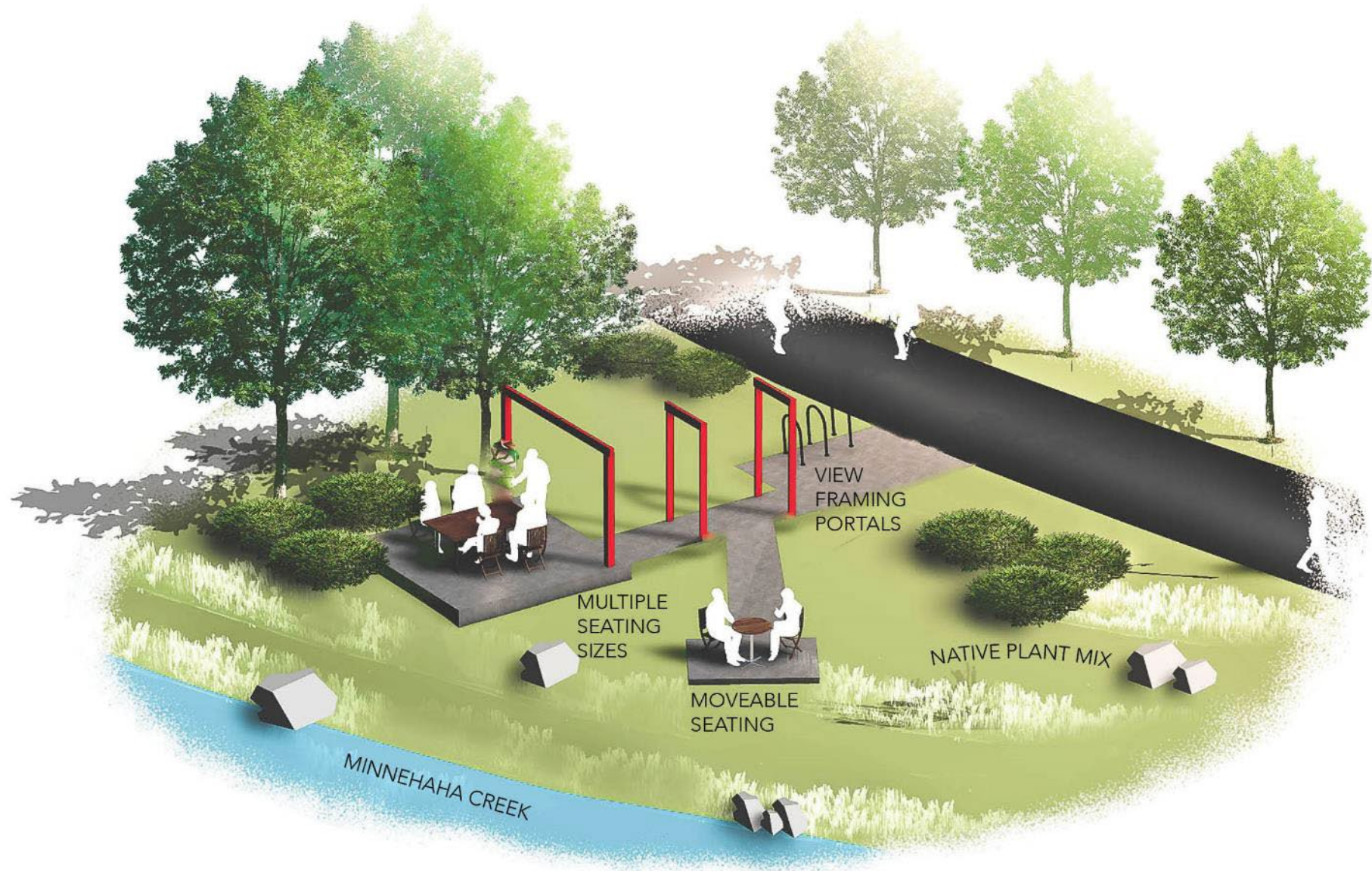
Picnic Area Concept A



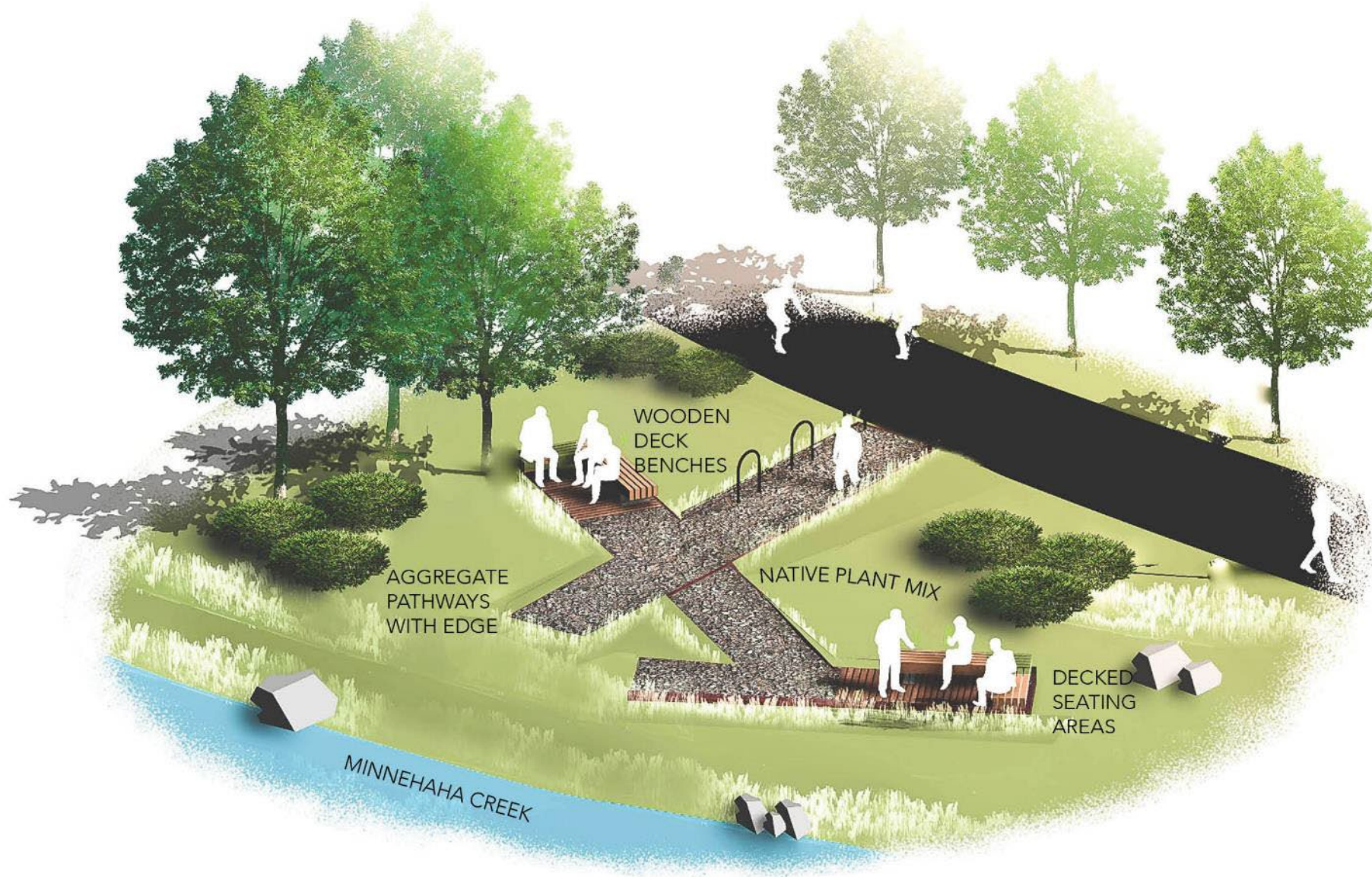
Picnic Area Concept B



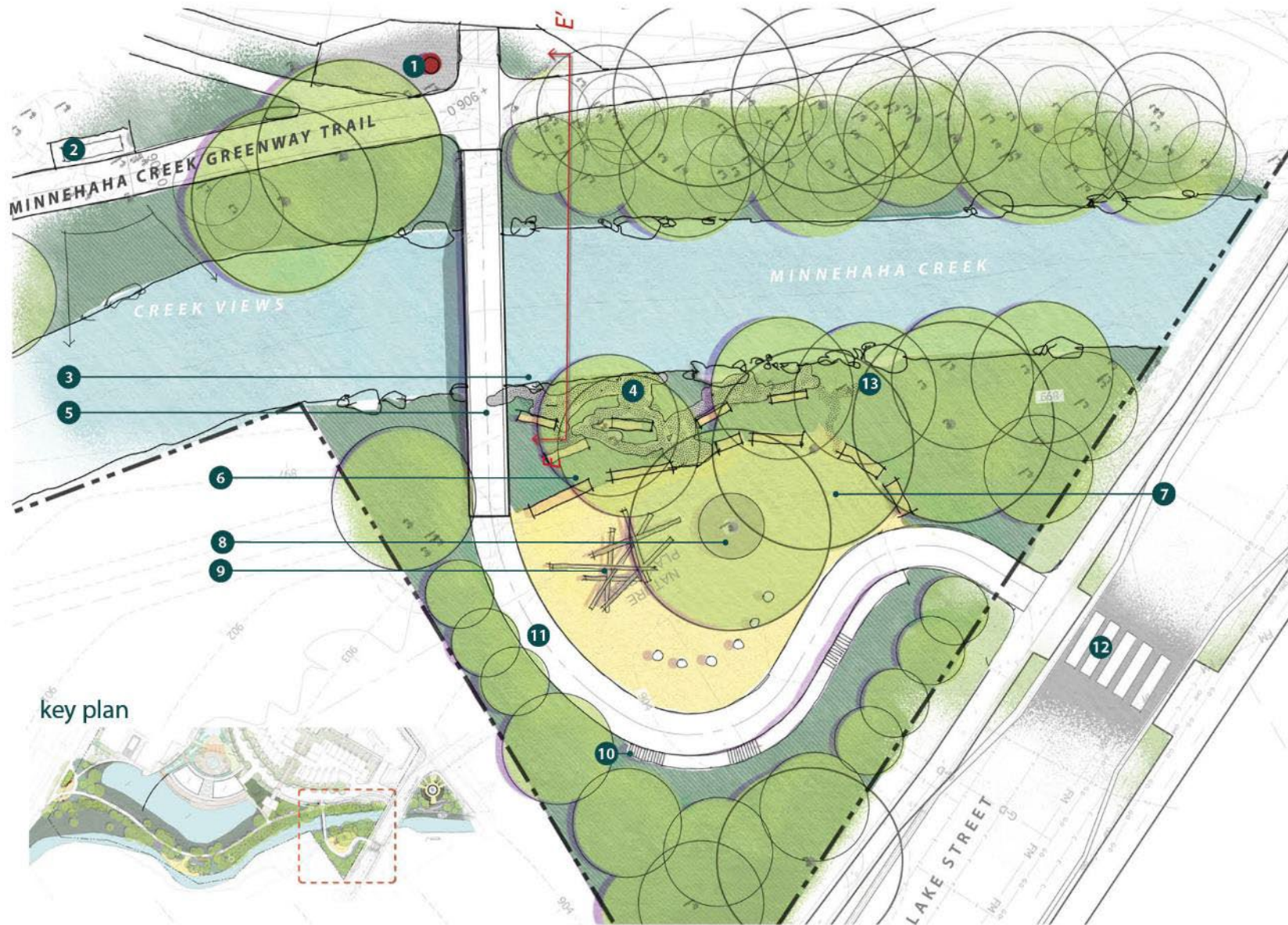
Picnic Area Concept C



Picnic Area Concept D

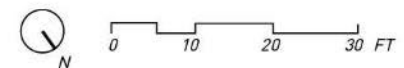


Nature-based Play Area

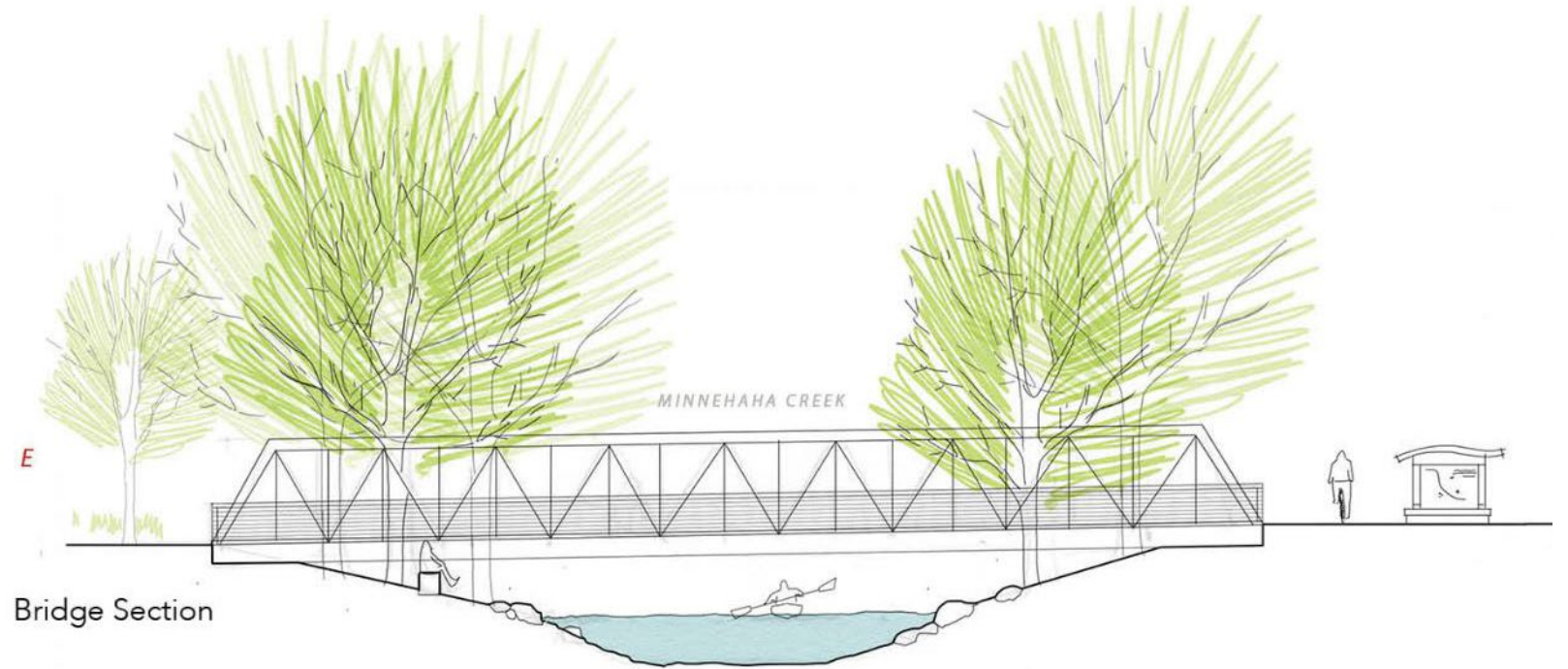


key

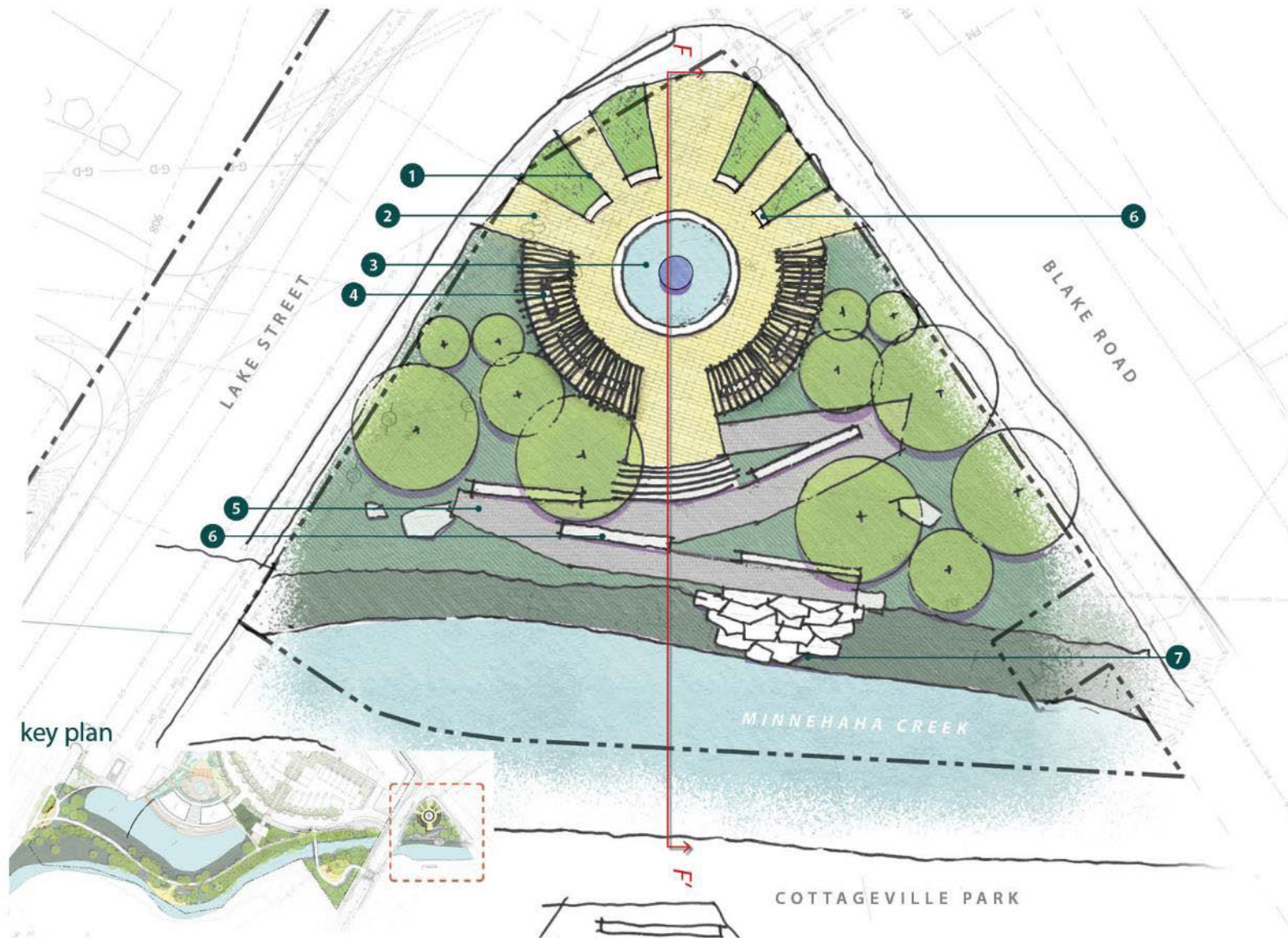
- 1 TRAILHEAD KIOSK
- 2 BENCH/PULL OFF
- 3 CREEK ACCESS
- 4 AGGREGATE PATH
- 5 ADA ACCESSIBLE BRIDGE
- 6 LIMESTONE SEATING
- 7 OPEN SPACE FOR PLAY
- 8 COMPOSITE DECK (OR PLANTING)
- 9 NATURE-BASED PLAY
- 10 CIP WALL WITH BENCHES
- 11 ADA WALK
- 12 CROSSWALK
- 13 PRESERVE EXISTING TREES



Play Area Precedent Photos



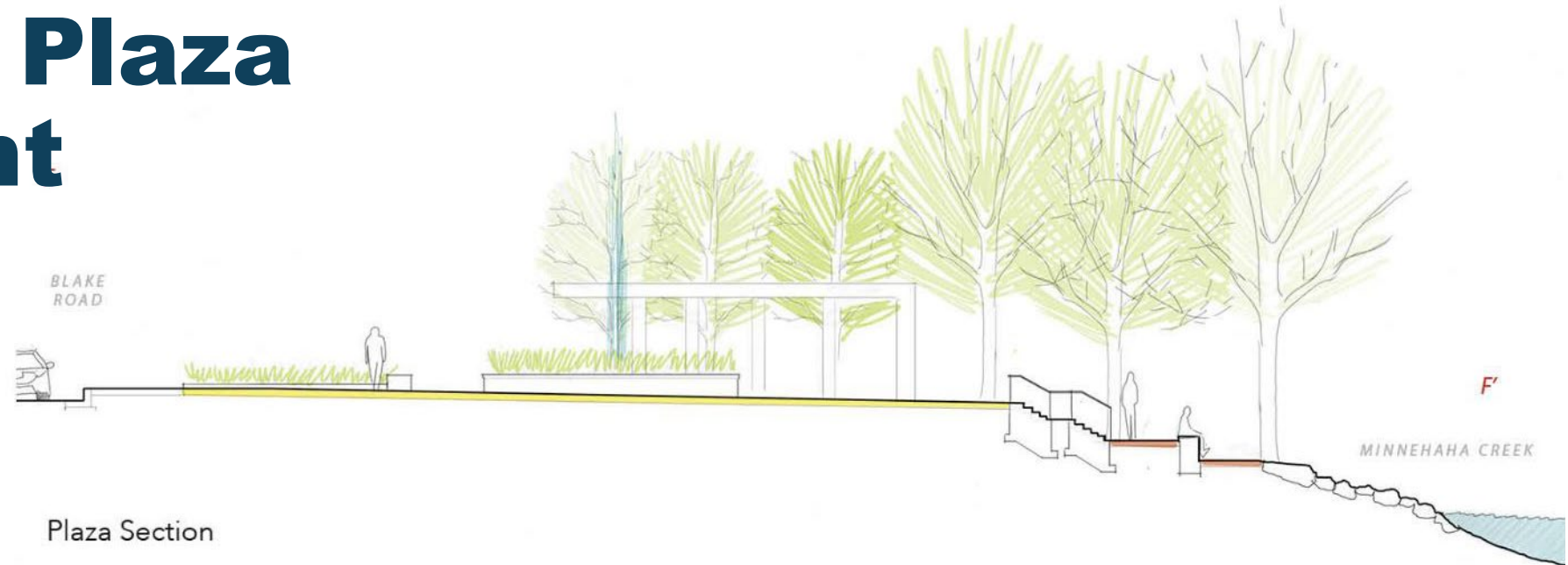
Gateway to Minnehaha Creek Greenway



key

- 1 PLANTER
- 2 PERMEABLE PAVERS
- 3 WATER AS PUBLIC ART
- 4 PERGOLA W/ SWING BENCH
- 5 AGGREGATE PATH
- 6 CIP WALLS W/ BENCHES
- 7 CREEK ACCESS

Gateway Plaza Precedent Photos



Plaza Section



Pergola with swing bench



Public art



Water access



Stone block seating

Engagement Activity



Next Steps

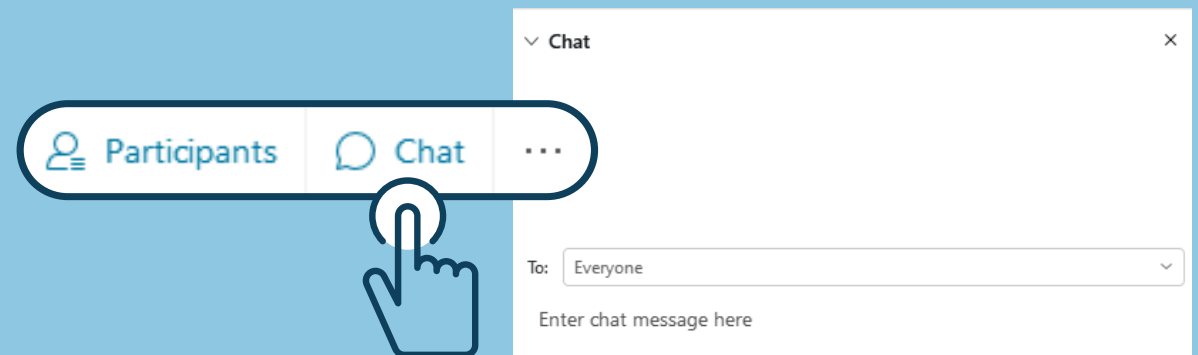


Let's Talk

- What other questions do you have?
- What are your concerns?
- What are you interested in learning more about?

▶ To ask a question, you may also call **612.799.6816** or email **alicia.uzarek@hdrinc.com**.

Click on the Raise Hand function to speak out loud.





MINNEHAHA CREEK
WATERSHED DISTRICT
QUALITY OF WATER, QUALITY OF LIFE

Thank you!



www.minnehahacreek.org/project/325-blake-road-restoration-and-redevelopment

Gabe Sherman

Planner – Project Manager

gsherman@minnehahacreek.org



mailchi.mp/minnehahacreek/m5227axdjn

Michael Hayman

Project Planning Manager

mhayman@minnehahacreek.org